

BA i10 WBF0016.00 MASUMA Windshield Wipers with Reference NO

Our Product Introduction

for more products please visit us on masumajp.com

Basic Information

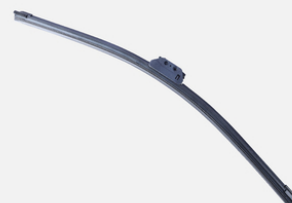
- Place of Origin: Guangdong, China
- Brand Name: MASUMA
- Model Number: MU-E022
- Minimum Order Quantity: 2 pieces
- Price: Negotiation
- Packaging Details: carton

MASUMA
 AUTO SPARE PARTS


Product Specification

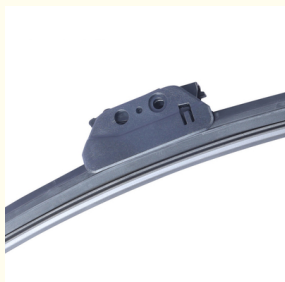
- Model: 147 (937_), GT (937_), A1 (8X1, 8XK), CALIBER, PANDA (169_), FIESTA V (JH_, JD_), ECOSPORT, INSIGHT (ZE_), TUCSON (JM), ACCENT III Saloon (MC), GENESIS (DH), I10 (BA, IA), TUCSON (TL), ACCENT III (MC), Q50, SPORTAGE (JE_, KM_), RIO II (JB), RIO II Saloon (
- Year: 2006-, 2011-, 2013-, 2012-, 2013-, 2008-, 1978-1994, 2011-, 2009-, 2003-2010, 2000-2010, 2001-2010, 2010-, 2003-, 1991-1999, 1997-2006, 1988-1999, 1999-2006, 1982-1989, 1990-2000, 1998-2007, 1983-1989, 2009-, 2011-, 2003-2009, 2008-, 2004-, 1996-2015, 2005
- OE NO.: CB08-67-330, 28790-30R05, 28790-9C001, 98360-1R000, 98360-2Y000, 7832534000, 7832534010, 85291-13020, 85291-87202, 28890-HA00B, 86542FL050, 76630-TVA-A01, 85212-52080, 85222-0D010, 85212-12370, 85212-12371, 85212-13030
- Car Fitment: Dodge, Seat, Infiniti, Kia, VW, Renault

MU-E022

MASUMA


L : 550.0

More Images



QUICK INSTALLATION GUIDE



THE MOST COMPATIBILITY



Product Description



Product Description

MASUMA No.	MU-E022
Part Name	Wiper Blade Masuma
OEM No.	Universal
Maintenance	Universal
In stock	Contact for inventory

The advantages of frameless and wireframe brushes come together in the stylish body of Masuma hybrid brushes. The robust housing with levers ensures that the work surface is firmly pressed against the glass, thereby ensuring effective moisture removal. The modern design of the body allows you to protect the inner frame from snow and ice, thereby preserving the functionality of the brush in the winter. Masuma is a global brand of auto parts, components and consumables. The main specialization of the brand: resource parts for post-warranty service of Japanese cars. The company's strategy is to offer consumers the best ratio of reliability and cost of spare parts. All products are manufactured to order, technology and under the control of the parent company Masuma Auto Spare Parts Co., LTD (Tokyo, Japan) at dozens of modern factories located in East Asia.

MASUMA SILICONE BEAM WIPER BLADE

Install Instructions of difference Wiper Arm (with differ Adapters)

	Fit	Adapter type	Install Steps
J-HOOK	⇔	F-2 アダプター Adapter type	① ② ③ カチッ! Click!
Slide Pin (P&H)	⇔	F-B4 アダプター Adapter type	① ② ③ カチッ! Click!
Pinch Tab (16L)	⇔	F-15 アダプター Adapter type	① ② ③ カチッ! Click!
TOP lock large (19mm) Arm	⇔	F-18 アダプター Adapter type	① ② ③ カチッ! Click!
Push Button Arm	⇔	F-10 アダプター Adapter type	① ② ③ カチッ! Click!
Pinch Tab Button (PTB)	⇔	F-10B アダプター Adapter type	① ② ③ カチッ! Click!
TOP Button	⇔	F-33 アダプター Adapter type	① ② ③ カチッ! Click!

MU-E022

MASUMA



L : 550.0

SILICONE BEAM WIPER BLADE

Please choose a good pair
of wipers.
Keep a good view in rainy days.



SUPERIOR
SILICONE



UNQUALIFIED WIPER

There are all kinds of safety problems



Loud Noise



Not Clean



Scratched Glass

POOR QUALITY WIPERS

Parts fall off, so that the wiper cannot be used normally when driving in the rain! Causes blurred vision ahead!



Fasteners fall off



Adhesive failure



Wiper arm loose

RESEARCH HAS SHOWN

66%  Traffic Accident

It's all because of the blurred vision ahead.

Please choose a good pair of wipers.

Keep a good view in rainy days.



SOLVE YOUR TROUBLES

Home Safely



Bird Shit

Sand Dust

Snow

Rain

THE MOST COMPATIBILITY

Suitable for 99% percent car models. One wiper blade, 13 options !



QUICK INSTALLATION GUIDE

**J&U HOOK
9x4mm**



**J&U HOOK
9x3mm**



1 Pinch the buckles on both sides and lift the cap



2 Push wiper arm through adapter cap



3 Insert arm into the adaptor interface



4 Clamp the cap, installation is complete



Note:

MASUMA auto parts covered more than 900,000 different OEM numbers, [here only show few parts.](#)
 Pls Contact us to check more and details information for you.

Search For Car Brand (Click)	Auto parts	Product List	Number of suitable car models
For Japanes Car: For Toyota For Honda For Nissan For Mazda For Lexus For Infiniti For Mitsubishi For Suzuki For Subaru For DAIHATSU For ISUZU For Fuso	Auto Engine Systems	Air Filters	1215
		Fuel Filters	255
		Oil Filters	588
		Spark Plugs	59
		Engine Mounts	888
		Ignition Coils	255
		Ignition Cable	77
		Timing Chain Kit	67
		Cylinder Head Gaskets	223
		Ball Joints	655
For Korean Car: For HYUNDAI For KIA	Auto Suspension Systems	Control Arms	394
		Rubber Bushing	685
		Shock Absorber Springs	153
		Shock Absorbers	323
For Europe Car: For Benz For BMW For Audi For VW For Porsche For Skoda For Renault For Peugeot For Volvo For Alfa Romeo	Auto Brake Systems	Stabilizer Links	453
		Suspension Strut Bearings	110
		Brake Pads	1966
		Brake Discs	825
		Brake shoes	220
		Brake Cables	216
		Brake Hoses	707
		Tie Rod Ends	345
		Tie Rods (Rack End)	247
		Steering Gear Boots	435
For America Car: For Ford For OPEL For Chevrolet	Auto Steering Systems	Steering Gears	60
	Air Conditioning Systems	Cabin Filters	736
		C.V. Joints	199
	Auto Transmission Systems	C.V. Joint Boots	157
		Tensioner & Belts	1043
		Wheel Hubs	103
		Antifreeze	4
	Fluid & Chemicals	Brake Lubricants	2
		Engine Lubricants	42
Transmission Fluids		15	
Other Auto Parts		5074	
Other brand: For Land Rover For Jeep For Ssangyong		Tire Repair Tools	57

	Auto Fastener & Clip	1881
Other Auto Parts	Lug Nuts & Accessories	233
	Other Vehicle Tools	15



MAIN CAR SERIES

Cover 90% Of JAPANESE And KOREA Cars



Corolla



Crown



Camry



Civic



Tiida



Accord



RX300



RAV4



Golf



Passo



HR-V



Fortuner



Yaris



Avanza



Land Cruiser



Pajero(Montero)



Mirage



Stream



Hilux



CR-V



Legacy



Fit (jazz)



HiAce



X-Trail



Primera



Cedric



Mazda 3



Mazda 6



Prius



City



Impreza



Focus



Company Profile



[View more history >>](#)

MASUMA was founded in **1998 Japan**, integrates R&D, production, sales and operation as one. It has its own wholly-owned subsidiary factory and joint venture production base in **GuangZhou China**, have an area of **30,000 sqm**, **500+ employees** in the company, the annual turnover to reach 55 million USD. Masuma specializes in the design, development, manufacturing, sales and service of Japanese, German, American, Chinese and Korean auto parts. The current products include lubricating oil, transmission fluid, brake oil, brake pad, brake disc, filter, spark plug, ignition coil, ball joint, swing arm, shock absorber, belt, wiper, water tank cover and other series, over ten thousands of varieties, and products are sold to more than 100 countries and regions in the world.

MASUMA	1998			1
2011		30,000	500	55
Masuma		100		



Manufacturing Technique



PRECISION

Automated machinery

100,000 pieces/day



TAKAMAZ-FEELER



BROTHER SPEEDIO



TOYO



Mitutoyo QC



NGATA



KAWATA

Exhibition

EXHIBITION



MASUMA Masuma (Guangzhou) International Trading Co., Ltd.

+8615323309608

msm@masuma.com

masumajp.com

No. 19, Liwu Road, Tanbu Town, Huadu District, Guangzhou