

## Tensioner Belt 16620-22010 16620-22011 16620-22012 16620-22013 for TOYOTA COROLLA ZZE122

Our Product Introduction

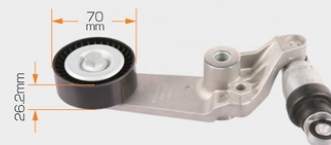
### Basic Information

- Place of Origin: Guangdong, China
- Brand Name: MASUMA
- Minimum Order Quantity: 2 pieces
- Price: Negotiation
- Packaging Details: carton

**MASUMA**  
 AUTO SPARE PARTS


### Product Specification

- Model: MX-5 I (NA), 3 Saloon (BK), 3 (BK)
- Year: 1989-1998, 2003-2009, 1999-2009, 1997-2009
- OE NO.: ZJ01-15-980B, ZJ01-15-980C, ZJ01-15-980D
- Car Fitment: Mazda
- Reference NO.: 03-40685-SX, YM185980, A07444, 8641 503001, TOA3864, V32-0173, 15-3494, TS-306, 8641 502003, 128306, 331316171138, 54-1129, 0-N2104, APV3005, 534 0287 10, 331316171288, VKM 64025, WG1432117, 03.80797, 1223660
- Warranty: 1 Years, Warranty 12 Months Or 30 Thousand Kilometer
- Type: Standard
- Car Model: JAPANESE CAR
- Size: 40.2\*27.7\*20.2 Cm/box, 12\*12\*6cm
- Product Name: Belt Tensioner

**MIP-1013**
**MASUMA**


### More Images



Model	Brand	Car Model	Chassis Number	Year	Comments
MIP-1013	TOYOTA	CELICA	1E111	1989-1998	1989-1998
MIP-1013	TOYOTA	CELICA	1E112	1989-1998	1989-1998
MIP-1013	TOYOTA	CELICA	1E113	1989-1998	1989-1998
MIP-1013	TOYOTA	CELICA	1E114	1989-1998	1989-1998
MIP-1013	TOYOTA	CELICA	1E115	1989-1998	1989-1998
MIP-1013	TOYOTA	CELICA	1E116	1989-1998	1989-1998
MIP-1013	TOYOTA	CELICA	1E117	1989-1998	1989-1998
MIP-1013	TOYOTA	CELICA	1E118	1989-1998	1989-1998
MIP-1013	TOYOTA	CELICA	1E119	1989-1998	1989-1998
MIP-1013	TOYOTA	CELICA	1E120	1989-1998	1989-1998
MIP-1013	TOYOTA	CELICA	1E121	1989-1998	1989-1998
MIP-1013	TOYOTA	CELICA	1E122	1989-1998	1989-1998
MIP-1013	TOYOTA	CELICA	1E123	1989-1998	1989-1998
MIP-1013	TOYOTA	CELICA	1E124	1989-1998	1989-1998
MIP-1013	TOYOTA	CELICA	1E125	1989-1998	1989-1998
MIP-1013	TOYOTA	CELICA	1E126	1989-1998	1989-1998
MIP-1013	TOYOTA	CELICA	1E127	1989-1998	1989-1998
MIP-1013	TOYOTA	CELICA	1E128	1989-1998	1989-1998
MIP-1013	TOYOTA	CELICA	1E129	1989-1998	1989-1998
MIP-1013	TOYOTA	CELICA	1E130	1989-1998	1989-1998
MIP-1013	TOYOTA	CELICA	1E131	1989-1998	1989-1998
MIP-1013	TOYOTA	CELICA	1E132	1989-1998	1989-1998
MIP-1013	TOYOTA	CELICA	1E133	1989-1998	1989-1998
MIP-1013	TOYOTA	CELICA	1E134	1989-1998	1989-1998
MIP-1013	TOYOTA	CELICA	1E135	1989-1998	1989-1998
MIP-1013	TOYOTA	CELICA	1E136	1989-1998	1989-1998
MIP-1013	TOYOTA	CELICA	1E137	1989-1998	1989-1998
MIP-1013	TOYOTA	CELICA	1E138	1989-1998	1989-1998
MIP-1013	TOYOTA	CELICA	1E139	1989-1998	1989-1998
MIP-1013	TOYOTA	CELICA	1E140	1989-1998	1989-1998
MIP-1013	TOYOTA	CELICA	1E141	1989-1998	1989-1998
MIP-1013	TOYOTA	CELICA	1E142	1989-1998	1989-1998
MIP-1013	TOYOTA	CELICA	1E143	1989-1998	1989-1998
MIP-1013	TOYOTA	CELICA	1E144	1989-1998	1989-1998
MIP-1013	TOYOTA	CELICA	1E145	1989-1998	1989-1998
MIP-1013	TOYOTA	CELICA	1E146	1989-1998	1989-1998
MIP-1013	TOYOTA	CELICA	1E147	1989-1998	1989-1998
MIP-1013	TOYOTA	CELICA	1E148	1989-1998	1989-1998
MIP-1013	TOYOTA	CELICA	1E149	1989-1998	1989-1998
MIP-1013	TOYOTA	CELICA	1E150	1989-1998	1989-1998

Contact Supplier send an enquiry to confirm suitable car

for more products please visit us on masumajp.com

## Product Description

### Product Description

<b>MASUMA No.</b>	MIP-1013
<b>Part Name</b>	Belt tensioner
<b>OEM No.</b>	16620-22010
<b>Maintenance</b>	Warranty 12 months or 30 thousand kilometer
<b>In stock</b>	In stock

Masuma drive belt tensioners ensure correct belt drive operation, proper belt tension and no slippage. Strong and wear-resistant materials used in the production of rollers and belt tensioners of the Masuma drive belt are resistant to the influence of external factors, have a long service life and exclude premature wear. High-precision bearings perform well at high rotational speeds and temperature fluctuations. Depending on the type of bearing used, its design has a special boot or oil seal, which retains the lubricant inside, preventing the bearing from jamming, and also makes it resistant to external contamination. Drive belt tensioners are guaranteed for 12 months. Wherever you bought or installed a part, within a year you have the right to return it by simply providing him with a receipt or other document confirming the purchase date and price. Even if you are not a certified auto mechanic and installed the part yourself in your garage, just keep your purchase receipt and, if a problem arises, you can always return the part. Masuma is a global brand of auto parts, components and consumables. The main specialization of the brand: resource parts for post-warranty service of Japanese cars. The company's strategy is to offer consumers the best ratio of reliability and cost of spare parts. All products are manufactured to order, technology and under the control of the parent company Masuma Auto Spare Parts Co., LTD (Tokyo, Japan) at dozens of modern factories located in East Asia.

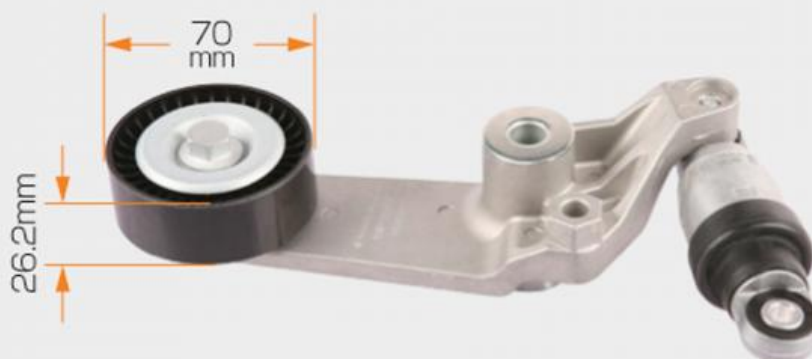
### SUITABLE FOR CAR MODELS DETAILS

MASUMA	Brand	Car model	Chassis number	Year	Configuration
MP-1013	TOYOTA	MR2	ZZW30L	1999-2001	ZZW30L 1800. 1ZZFE. DOHC. EFI. CONVERTIBLE. 2WD. Door 2
MP-1013	TOYOTA	MR2	ZZW30L	2001-2004	ZZW30L 1800. 1ZZFE. DOHC. EFI. CONVERTIBLE. 2WD. Door 2
MP-1013	TOYOTA	MR2	ZZW30L	2004-2005	ZZW30L 1800. 1ZZFE. DOHC. EFI. CONVERTIBLE. 2WD. Door 2
MP-1013	TOYOTA	RAV4	ZCA25L	2000-2001	ZCA25L 1800. 1ZZFE. DOHC. EFI. SUV Offroad. 2WD. Door 3
MP-1013	TOYOTA	RAV4	ZCA25L	2001-2004	ZCA25L 1800. 1ZZFE. DOHC. EFI. SUV Offroad. 2WD. Door 3
MP-1013	TOYOTA	RAV4	ZCA25L	2004-2005	ZCA25L 1800. 1ZZFE. DOHC. EFI. SUV Offroad. 2WD. Door 3
MP-1013	TOYOTA	RAV4	ZCA26L	2000-2001	ZCA26L 1800. 1ZZFE. DOHC. EFI. SUV Offroad. 2WD. Door 5
MP-1013	TOYOTA	RAV4	ZCA26L	2001-2004	ZCA26L 1800. 1ZZFE. DOHC. EFI. SUV Offroad. 2WD. Door 5
MP-1013	TOYOTA	RAV4	ZCA26L	2004-2005	ZCA26L 1800. 1ZZFE. DOHC. EFI. SUV Offroad. 2WD. Door 5
MP-1013	TOYOTA	AURIS	ZZE150L	2007-2008	ZZE150L 1400. 4ZZFE. DOHC. EFI. HATCHBACK. 2WD. Door 3
MP-1013	TOYOTA	AURIS	ZZE150L	2007-2008	ZZE150L 1400. 4ZZFE. DOHC. EFI. HATCHBACK. 2WD. Door 5
MP-1013	TOYOTA	COROLLA	ZZE111L	1999-2001	ZZE111L 1400. 4ZZFE. DOHC. EFI. HATCHBACK. 2WD. Door 3
MP-1013	TOYOTA	COROLLA	ZZE111L	2001-2001	ZZE111L 1400. 4ZZFE. DOHC. EFI. HATCHBACK. 2WD. Door 3
MP-1013	TOYOTA	COROLLA	ZZE112L	1999-2001	ZZE112L 1600. 3ZZFE. DOHC. EFI. HATCHBACK. 2WD. Door 3
MP-1013	TOYOTA	COROLLA	ZZE112L	2001-2001	ZZE112L 1600. 3ZZFE. DOHC. EFI. HATCHBACK. 2WD. Door 3
MP-1013	TOYOTA	COROLLA	ZZE120L	2001-2004	ZZE120L 1400. 4ZZFE. DOHC. EFI. HATCHBACK. 2WD. Door 5
MP-1013	TOYOTA	COROLLA	ZZE120L	2001-2006	ZZE120L 1400. 4ZZFE. DOHC. EFI. HATCHBACK. 2WD. Door 3
MP-1013	TOYOTA	COROLLA	ZZE120L	2001-2006	ZZE120L 1400. 4ZZFE. DOHC. EFI. HATCHBACK. 2WD. Door 5
MP-1013	TOYOTA	COROLLA	ZZE120L	2004-2004	ZZE120L 1400. 4ZZFE. DOHC. EFI. HATCHBACK. 2WD. Door 5
MP-1013	TOYOTA	COROLLA	ZZE120L	2004-2006	ZZE120L 1400. 4ZZFE. DOHC. EFI. HATCHBACK. 2WD. Door 5
MP-1013	TOYOTA	COROLLA	ZZE120L	2006-2007	ZZE120L 1400. 4ZZFE. DOHC. EFI. HATCHBACK. 2WD. Door 5
MP-1013	TOYOTA	COROLLA	ZZE120L	2008-2007	ZZE120L 1400. 4ZZFE. DOHC. EFI. HATCHBACK. 2WD. Door 5

Contact Supplier send an enquiry to  
confirm suitable car

# MIP-1013

# MASUMA



CERTIFICATE

Guarantee of authenticity



## MASUMA

**Note:**

MASUMA auto parts covered more than 900,000 different OEM numbers, [here only show few parts.](#)  
Pls Contact us to check more and details information for you.

Search For Car Brand (Click)	Auto parts	Product List	Number of suitable car models
<b>For Japanes Car:</b>  For Toyota For Honda For Nissan For Mazda For Lexus For Infiniti		Air Filters	1215
		Fuel Filters	255
		Oil Filters	588
		Spark Plugs	59
		Engine Mounts	888

For Mitsubishi	Auto Engine Systems	Ignition Coils	255
For Suzuki		Ignition Cable	77
For Subaru		Timing Chain Kit	67
For DAIHATSU		Cylinder Head Gaskets	223
For ISUZU		Ball Joints	655
For Fuso			
<b>For Korean Car:</b>		Control Arms	394
For HYUNDAI	Auto Suspension Systems	Rubber Bushing	685
For KIA		Shock Absorber Springs	153
		Shock Absorbers	323
<b>For Europe Car:</b>		Stabilizer Links	453
For Benz		Suspension Strut	110
For BMW	Auto Brake Systems	Bearings	1966
For Audi		Brake Pads	825
For VW		Brake Discs	220
For Porsche		Brake shoes	216
For Skoda		Brake Cables	707
For Renault		Brake Hoses	345
For Peugeot		Tie Rod Ends	247
For Volvo		Tie Rods (Rack End)	435
For Alfa Romeo		Steering Gear Boots	60
		Steering Gears	736
<b>For America Car:</b>	Auto Steering Systems	Cabin Filters	199
For Ford	Air Conditioning Systems	C.V. Joints	157
For OPEL		C.V. Joint Boots	1043
For Chevrolet		Tensioner & Belts	103
	Auto Transmission Systems	Wheel Hubs	4
		Antifreeze	2
		Brake Lubricants	42
		Engine Lubricants	15
		Transmission Fluids	5074
<b>Other brand:</b>	Fluid & Chemicals	Other Auto Parts	57
For Land Rover		Tire Repair Tools	1881
For Jeep		Auto Fastener & Clip	233
For Ssangyong		Lug Nuts & Accessories	15
		Other Vehicle Tools	



**MASUMA**

# MAIN CAR SERIES

Cover 90% Of JAPANESE And KOREA Cars



Corolla



Crown



Camry



Civic



Tiida



Accord



RX300



RAV4



Golf



Passo



HR-V



Fortuner



Yaris



Avanza



Land Cruiser



Pajero(Montero)



Mirage



Stream



Hilux



CR-V



Legacy



Fit ( jazz)



HiAce



X-Trail



Primera



Cedric



Mazda 3



Mazda 6



Prius



City



Impreza



Focus



## Company Profile



[View more history >>](#)

**MASUMA** was founded in **1998 Japan**, integrates R&D, production, sales and operation as one. It has its own wholly-owned subsidiary factory and joint venture production base in **GuangZhou China**, have an area of **30,000 sqm**, **500+ employees** in the company, the annual turnover to reach 55 million USD. Masuma specializes in the design, development, manufacturing, sales and service of Japanese, German, American, Chinese and Korean auto parts. The current products include lubricating oil, transmission fluid, brake oil, brake pad, brake disc, filter, spark plug, ignition coil, ball joint, swing arm, shock absorber, belt, wiper, water tank cover and other series, over ten thousands of varieties, and products are sold to more than 100 countries and regions in the world.

<b>MASUMA</b>	1998			1
2011		30,000	500	55
Masuma		100		



## Manufacturing Technique





## PRECISION

Automated machinery

100,000 pieces/day



TAKAMAZ-FEELER



BROTHER SPEEDIO



TOYO



Mitutoyo QC



NGATA



KAWATA

Exhibition

# EXHIBITION



**MASUMA** Masuma (Guangzhou) International Trading Co., Ltd.

+8615323309608

msm@masuma.com

masumajp.com

No. 19, Liwu Road, Tanbu Town, Huadu District, Guangzhou