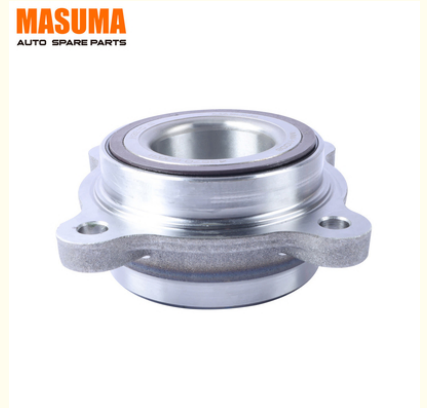


MASUMA NO. MW-11006 WHEEL HUB ASSY for LEXUS LX450D VDJ201L
43570-60031 43570-60030 43570-0C010

Basic Information

- Place of Origin: Guangdong, China
- Brand Name: MASUMA
- Minimum Order Quantity: 4 pieces
- Price: Negotiation

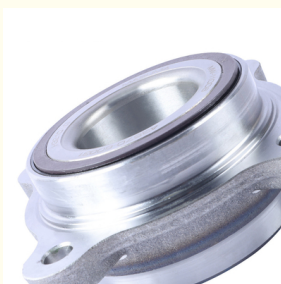


Product Specification

- | | |
|----------------|--|
| ● OE NO.: | 43570-60031, 43570-60030, 43570-0C010 |
| ● Condition: | New |
| ● Model: | LX (_J2_), SEQUOIA (_K6_), LAND CRUISER 200 (_J2_), TUNDRA Pickup (_K5_, _K6_), Tundra, SEQUOIA, Coaster, Land Cruiser, LAND CRUISER 100, COASTER (CHINA), Land Cruiser Prado, LAND CRUISER(CHINA), Lexus GX470, LEXUS LX600/500D, LEXUS LX570, LEXUS GX460 |
| ● Year: | 2007-, 2007-, 2006-, 2007-, 2000-, 2000-2007, 2000-2007, 2002-, 2008-2016, 2000-, 2000-, 2000-2001, 2000-2021, 2000-2001, 2007-, 2007-2016, 2002-2009, 2007-, 2015-, 2005-, 2009-, 2009-, 2021-2022, 2021-, 2021-, 2021-, 2021-, 2021-, 2007-, 2000-2016, 2002-2 |
| ● Car Fitment: | LEXUS(JP), TOYOTA (FAW)(US), TOYOTA (FAW)(EU), TOYOTA(EU), TOYOTA(JP), TOYOTA (FAW)(GR), LEXUS(US), Lexus, |



More Images

[illegible]

Contact Supplier send an enquiry to confirm suitable car

Product Description

Product Description

MASUMA No.	MW-11006
Part Name	Hub knot
OEM No.	43570-0C010,43570-60030,43570-60031
Maintenance	Warranty 12 months or 30 thousand kilometer
In stock	In stock

Masuma hubs are manufactured to exact factory OEM specifications, making them easy to replace worn original parts. The service life of bearings in Masuma hubs is comparable to that of the original ones and significantly exceeds the service life of the contract ones. parts that are often installed by car owners. The guarantee for the hub assemblies is 12 months. Wherever you bought or installed a part, within a year you have the right to return it by simply providing him with a receipt or other document confirming the purchase date and price. Even if you are not a certified auto mechanic and installed the part yourself in your garage, just keep your purchase receipt and, if a problem arises, you can always return the part. Masuma is a global brand of auto parts, components and consumables. The main specialization of the brand: resource parts for post-warranty service of Japanese cars. The company's strategy is to offer consumers the best ratio of reliability and cost of spare parts.

SUITABLE FOR CAR MODELS DETAILS

MASUMA	Brand	Car model	Chassis number	Year	Configuration
MV-11006	LEXUS	LX450D	VDJ201L	2015-	VDJ201L 4500. 1VDFTV. DOHC. VVT-i. CRI. INTERCOOLER TWIN TURBO. SUV Offroad. 4WD. Door 5.
MV-11006	LEXUS	LX570	URJ201L	2007-2010	URJ201L 5700. 3URFE. DOHC. EFI. SUV Offroad. 4WD. Door 5.
MV-11006	LEXUS	LX570	URJ201L	2010-2021	URJ201L 5700. 3URFE. DOHC. EFI. SUV Offroad. 4WD. Door 5.
MV-11006	TOYOTA	LAND CRUISER	VDJ200L	2007-2010	VDJ200L 4500. 1VDFTV. DOHC. INTERCOOLER TWIN TURBO. SUV Offroad. 4WD. Door 5.
MV-11006	TOYOTA	LAND CRUISER	VDJ200L	2010-2021	VDJ200L 4500. 1VDFTV. DOHC. INTERCOOLER TWIN TURBO. SUV Offroad. 4WD. Door 5.
MV-11006	TOYOTA	LAND CRUISER	URJ202L	2012-2021	URJ202L 4600. 1URFE. DOHC. VVT-i. EFI. SUV Offroad. 4WD. Door 5.
MV-11006	TOYOTA	SEQUOIA	UPK60L	2009-2012	UPK60L 4600. 1URFE. DOHC. VVT-i. EFI. SUV Offroad. 2WD. Door 5.
MV-11006	TOYOTA	SEQUOIA	UPK65L	2009-2012	UPK65L 4600. 1URFE. DOHC. VVT-i. EFI. SUV Offroad. 4WD. Door 5.
MV-11006	TOYOTA	TUNDRA	UPK50L	2009-2021	UPK50L 4600. 1URFE. DOHC. VVT-i. EFI. PICKUP. 2WD. Door 2.
MV-11006	TOYOTA	TUNDRA	UPK51L	2009-2010	UPK51L 4600. 1URFE. DOHC. VVT-i. EFI. PICKUP. 2WD. Door 2.
MV-11006	TOYOTA	TUNDRA	UPK51L	2009-2021	UPK51L 4600. 1URFE. DOHC. VVT-i. EFI. PICKUP. 2WD. Door 4.
MV-11006	TOYOTA	TUNDRA	UPK52L	2009-2010	UPK52L 4600. 1URFE. DOHC. VVT-i. EFI. PICKUP. 2WD. Door 4.
MV-11006	TOYOTA	TUNDRA	UPK55L	2009-2010	UPK55L 4600. 1URFE. DOHC. VVT-i. EFI. PICKUP. 2WD. Door 2.
MV-11006	TOYOTA	TUNDRA	UPK56L	2009-2010	UPK56L 4600. 1URFE. DOHC. VVT-i. EFI. PICKUP. 4WD. Door 2.
MV-11006	TOYOTA	TUNDRA	UPK56L	2009-2010	UPK56L 4600. 1URFE. DOHC. VVT-i. EFI. PICKUP. 4WD. Door 4.
MV-11006	TOYOTA	TUNDRA	UPK56L	2009-2021	UPK56L 4600. 1URFE. DOHC. VVT-i. EFI. PICKUP. 4WD. Door 4.
MV-11006	TOYOTA	TUNDRA	UPK57L	2009-2010	UPK57L 4600. 1URFE. DOHC. VVT-i. EFI. PICKUP. 4WD. Door 4.
MV-11006	TOYOTA	LAND CRUISER	UZJ200L	2007-2010	UZJ200L 4700. 2UZFE. DOHC. EFI. SUV Offroad. 4WD. Door 5.
MV-11006	TOYOTA	LAND CRUISER	UZJ200L	2010-2012	UZJ200L 4700. 2UZFE. DOHC. EFI. SUV Offroad. 4WD. Door 5.
MV-11006	TOYOTA	LAND CRUISER	URJ200L	2007-2010	URJ200L 5700. 3URFE. DOHC. EFI. SUV Offroad. 4WD. Door 5.
MV-11006	TOYOTA	LAND CRUISER	URJ200L	2010-2021	URJ200L 5700. 3URFE. DOHC. EFI. SUV Offroad. 4WD. Door 5.
MV-11006	TOYOTA	SEQUOIA	UPK65L	2009-2012	UPK65L 5700. 3URFBE. DOHC. EFI. SUV Offroad. 4WD.

Contact Supplier send an enquiry to
confirm suitable car

MW-1 1006

MASUMA



CERTIFICATE Guarantee of authenticity



MASUMA

Note:

MASUMA auto parts covered more than 900,000 different OEM numbers, [here only show few parts.](#)
Pls Contact us to check more and details information for you.

Search For Car Brand (Click)	Auto parts	Product List	Number of suitable car models
For Japanes Car:		Air Filters	1215
		Fuel Filters	255
		Oil Filters	588
		Spark Plugs	59
		Engine Mounts	888
For Toyota			
For Honda			
For Nissan			
For Mazda			
For Lexus			
For Infiniti			

For Mitsubishi	Auto Engine Systems	Ignition Coils	255
For Suzuki			
For Subaru		Ignition Cable	77
For DAIHATSU		Timing Chain Kit	67
For ISUZU			
For Fuso		Cylinder Head Gaskets	223
		Ball Joints	655
For Korean Car:		Control Arms	394
For HYUNDAI		Rubber Bushing	685
For KIA		Shock Absorber Springs	153
		Shock Absorbers	323
For Europe Car:	Auto Suspension Systems	Stabilizer Links	453
For Benz		Suspension Strut	110
For BMW		Bearings	
For Audi		Brake Pads	1966
For VW			
For Porsche		Brake Discs	825
For Skoda			
For Renault		Brake shoes	220
For Peugeot			
For Volvo	Auto Brake Systems	Brake Cables	216
For Alfa Romeo		Brake Hoses	707
		Tie Rod Ends	345
		Tie Rods (Rack End)	247
For America Car:			
For Ford	Auto Steering Systems	Steering Gear Boots	435
For OPEL		Steering Gears	60
For Chevrolet			
	Air Conditioning Systems	Cabin Filters	736
		C.V. Joints	199
Other brand:		C.V. Joint Boots	157
For Land Rover	Auto Transmission Systems	Tensioner & Belts	1043
For Jeep		Wheel Hubs	103
For Ssangyong		Antifreeze	4
		Brake Lubricants	2
		Engine Lubricants	42
	Fluid & Chemicals	Transmission Fluids	15
		Other Auto Parts	5074
		Tire Repair Tools	57
		Auto Fastener & Clip	1881
	Other Auto Parts	Lug Nuts & Accessories	233
		Other Vehicle Tools	15

MASUMA

MAIN CAR SERIES

Cover 90% Of JAPANESE And KOREA Cars



Corolla



Crown



Camry



Civic



Tiida



Accord



RX300



RAV4



Golf



Passo



HR-V



Fortuner



Yaris



Avanza



Land Cruiser



Pajero(Montero)



Mirage



Stream



Hilux



CR-V



Legacy



Fit (jazz)



HiAce



X-Trail



Primera



Cedric



Mazda 3



Mazda 6



Prius



City



Impreza



Focus



PRECISION

Automated machinery

100,000 pieces/day



TAKAMAZ-FEELER



BROTHER SPEEDIO



TOYO



Mitutoyo QC



NGATA



KAWATA

Exhibition

EXHIBITION



MASUMA Masuma (Guangzhou) International Trading Co., Ltd.

+8615323309608

msm@masuma.com

masumajp.com

No. 19, Liwu Road, Tanbu Town, Huadu District, Guangzhou