

MO-2105 MASUMA Ball Joint Boot for Toyota 43330-19115 43330-39345 43330-19095 43330-09090

Our Product Introduction

for more products please visit us on masumajp.com

Basic Information

- Place of Origin: guangdong
- Brand Name: MASUMA
- Minimum Order Quantity: 2 pieces
- Price: Negotiation



Product Specification

- Model: COROLLA (_E10_), MATRIX (_E13_), CAMRY Liftback (_V1_), CAMRY Saloon (_V1_)
- Year: 1991-1999, 1983-1988, 1983-1988, 2002-2007
- OE NO.: 43330-19115, 43330-39345, 43330-19095, 43330-09090, 43345-32030
- Reference NO.: 7476141, BCA6697, T-5071, 4840100689, 850013561, 57570, BR1783, 72220R, 850013549, 58067302, BS-220R, BS-220, 72-02-220R, G6-1467, FCA6697, 210870, TO-WP-2235, 4209032, 72-02-221, 0788078
- Car Fitment: Toyota
- Warranty: 12 Months
- Car Model: CAR
- Product Name: Ball Joint Boot
- YEAR: 1989-2021
- MOQ: 2



More Images



Product Description

Product Description

MO-2105 MASUMA Other suspension components Ball joint boot 43330-19115 43330-39345 43330-19095 43330-09090 for Toyota

MASUMA No.	MO-2105
Part Name	Ball joint boot
OEM No.	43330-19115,43330-39345,43330-19095,43330-09090,43345-32030
Warranty	12 months
MOQ	2 pcs
Delivery time	3day / 7day
Size	31*31*33

The anthers of the Masuma ball joints have proven themselves well. Resistance to deformation and various loads will protect the connection from dirt and moisture. Masuma is a global brand of auto parts, components and consumables. The main specialization of the brand: resource parts for post-warranty service of Japanese cars. The company's strategy is to offer consumers the best ratio of reliability and cost of spare parts. All products are manufactured to order, technology and under the control of the parent company Masuma Auto Spare Parts Co., LTD (Tokyo, Japan) at dozens of modern factories located in East Asia.

Suitable for car models details

Contact us
Contact Supplier for more detail >>

Catalogue

ENGINE OIL



DIESEL ENGINE OIL

COMMERCIAL VEHICLE
ENGINE OILAUTOMATIC
TRANSMISSION FLUID

BRAKE FLUID



BRAKE FLUID KIT



BRAKE CLEANER KIT



COOLANT



REFRIGERANT



RTV SILICONE



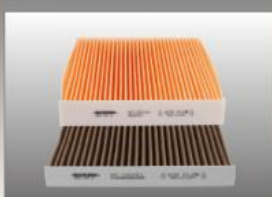
OIL FILTER



AIR FILTER



CABIN FILTER



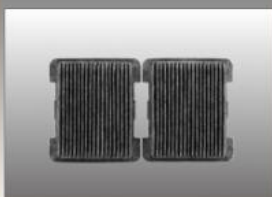
FUEL FILTER



TRANSMISSION FILTER KIT



HYBRID BATTERY FILTER



FUEL FILTER



DISC BRAKE PADS



BRAKE HOSE



BRAKE PAD SENSOR CABLE



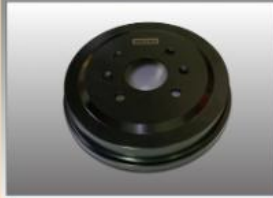
BRAKE SHOE



BRAKE DISC



BRAKE DRUM



BRAKE CYLINDER SET



BRAKE MASTER CYLINDER



CLUTCH MASTER CYLINER



CLUTCH CYLINDER



BRAKE CALIPER REPAIR KIT



RADIATOR CAP



THERMOSTAT



CONTROL ARM



CONTROL ROD



BALL JOINT



INNER RACK END



OUTER TIE ROD END



STABILIZER LINK



PITMAN ARM



IDLER ARM



TIE ROD ASSEMBLY



STEERING BOOT



STEERING BOOT
(SILICONE)



CV JOINT AXLE ASSEMBLY



CONSTANT VELOCITY JOINT



DRIVE SHAFT BOOT



DRIVE SHAFT BOOT
(SILICONE)



V/FAN/VARI-SPEED BELT



BELT TENSIONER IDLER



MEASURING TOOL OF BELT



TIMING CHAIN KIT



WHEEL HUB UNIT



SHOCK ABSORBER



COIL SPRING



UPPER STRUT MOUNT



ENGINE MOUNTS



SHOCK ABSORBER
DUST COVER



BALL JOINT DUST COVER



SWAY BAR BUSHING



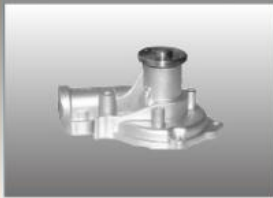
AUTOMOTIVE RUBBER
PARTS



CAP ASSY FUEL FILTER



WATER PUMP



FUEL PUMP



FUEL PUMP FILTER



CLUTCH DISC



FUEL FILTER SENSOR



OXYGEN SENSOR



IGNITION COIL



IGNITION CABLE



SPARK PLUG



GLOW PLUG



AUTOMOTIVE FUSE



LED HEADLIGHT



LED AUTO BULBS



HALOGEN BULB



XENON HID BULB



RADIATOR



CONDENSER



FUEL TANK CAP



WIPER BLADE
(STANDARD)



WIPER BLADE
(PREMIUM)



BEAM WIPER BLADE
(SILICONE)



HYBRID WIPER BLADE



BLADE WIPER (REAR)



SNOW BLADE
(PREMIUM)



SNOW BLADE
(STANDARD)



WIPER BLADE REFILL



AUTOMOTIVE CLIPS &
FASTENERS (2pcs/50pcs)



WHEEL NUT



SELF-TAPPING SCREW
BOLT



DRAIN BOLT
(PLUG/MAGNET)



ECCENTRIC BOLT



BOLT (FOR TRUCK)



CV AXEL NUT



COTTER PINS



UNIVERSAL-JOINT
CROSS GREASE FITTING



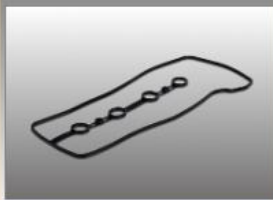
ENGINE GASKET



THERMOSTAT GASKET



VALVE COVER GASKET



INJECTOR WASHERS



UNIVERSAL JOINT



DRIVE SHAFT



BRONZE HUB BUSHINGS



EXHAUST PIPE GASKET



AUTO EXHAUST
FLEXIBLE PIPE



TIRE-PATCH



VULCANIZING CEMENT
FOR TIRE REPAIRS



TIRE REPAIR TOOL KIT



BATTERY HOLD
DOWN BRACKET



ZIP TIE



DRIVE SHAFT BOOT CLIP



HOSE CLAMP









STARTER CONTACTS



[View more product >>](#)

HOT SALE

Hot Sale Related Products

<p>#1</p>  <p>Oil filter</p> <p>★★★★★</p>	<p>#2</p>  <p>Cabin filter</p> <p>★★★★★</p>	<p>#3</p>  <p>Air filter</p> <p>★★★★★</p>
<p>#4</p>  <p>Brake pads</p> <p>★★★★★</p>	<p>#5</p>  <p>Spark plug</p> <p>★★★★★</p>	<p>#6</p>  <p>Wiper blade</p> <p>★★★★★</p>

[Learn more..](#)

Auto Oil	Brake System Parts	Electrical Parts
Wiper Blade	Shock Mitigation System	Suspension Steering Series
Auto Filters Series	Auto Engine Parts	Auto Fuel System

Company Information

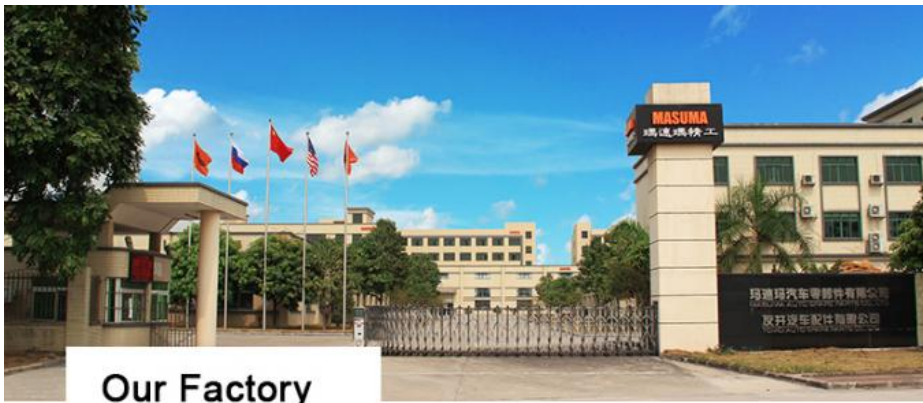
COMPANY PROFILE

MASUMA was founded in 1998 Japan, integrates R&D, production, sales and operation as one. It has its own wholly-owned subsidiary factory and joint venture production base in China, have an area of 30,000 sqm, 500+ employees in the company, the annual turnover to reach 55 million USD.

Masuma specializes in the design, development, manufacturing, sales and service of Japanese, German, American, Chinese and Korean auto parts. The current products include lubricating oil, transmission fluid, brake oil, brake pad, brake disc, filter, spark plug, ignition coil, ball joint, swing arm, shock absorber, belt, wiper, water tank cover and other series, over ten thousands of varieties, and products are sold to more than 100 countries and regions in the world.

MASUMA は1998年に日本で設立されました。日本では自動車産業が高度に発展しており、日本の増産自動車部品株式会社と提携しており、研究開発、製造、販売、運営を1つに統合しています。中国に完全子会社の子会社工場と合弁会社の生産拠点を持っています。2011年、広州増馬自動車スベアパーツ株式会社は、広州花都区の自動車都市にある中国に設立されました。同社の面積は30,000平方メートル、従業員数は500人以上で、年間売上高は55に達します。百万米ドル。Masumaは、日本、ドイツ、アメリカ、中国、韓国の自動車部品の設計、開発、製造、販売、サービスを専門としています。現在の製品には、潤滑油、トランスミッションフルード、ブレーキオイル、ブレーキパッド、ブレーキディスク、フィルター、スパークプラグ、イグニッションコイル、ボールジョイント、スイングアーム、ショックアブソーバー、ベルト、ワイパー、ウォータータンクカバーなどのシリーズが含まれます。品種の、そして製品は世界の100以上の国と地域に販売されています。

[view more >>](#)



Our Factory

FOUNDED 2011
AREA 30,000m²



OUR TEAM

WORKERS 537
MANAGEMENT 45



PROFESSION

R&D 14
QC 29



PRECISION

Automated machinery

100,000 pieces/day



TAKAMAZ-FEELER



BROTHER SPEEDIO



TOYO



Mitutoyo QC



NGATA



KAWATA

[View more >>](#)

Exhibition

EXHIBITION





FAQ

1. Are you manufacturer?

Yes, we are factory in Huadu district, Guangzhou.

2. What's your company business range?

We supply full range of auto spare parts.

3. What is your delivery time?

All the parts we have stock, normally delivery time within 3-5 days from our warehouse.

4. Do you have OEM service?

Yes, we can do OEM for customer, please feel free to contact us for details.

5. Can I get sample for evaluation?

Certainly, we can sell 1-2 pcs as samples, just make an order on line is ok, the samples will be ready for delivery in 3-7 days.

6. Does your company have any websites?

Please check www.masuma.com or www.masuma.ru.

7. Do you have product catalogues?

Yes, we do! Please do not hesitate to contact our sales

8. How to be your country's or regional's agents?

Please consult our staffs for further information.

9. When can I get the price?

We usually quote within 24 hours after we get your inquiry. If you are very urgent to get the price, please call us or tell us in your email so that we will regard your inquiry priority.

10. What about the transportation and delivery date?

Normally we use shipment to transport the goods. It is about 25-40 days. It also depends on which country and port you are. It could be shorter if you need to send the goods like Asian. If there are some emergencies we can send the goods via air express, as long as you afford the traffic expense.

[Contact us>>](#)

MASUMA Masuma (Guangzhou) International Trading Co., Ltd.



+8615323309608



msm@masuma.com



masumajp.com

No. 19, Liwu Road, Tanbu Town, Huadu District, Guangzhou