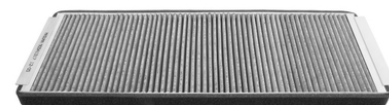
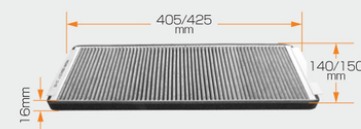
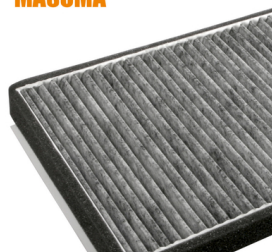


Our Product Introduction

MASUMA
AUTO SPARE PARTS



MC-E4068CL MASUMA

[illegible]

Product Description



Product Description

| | |
|--------------------|------------------------------|
| MASUMA No. | MC-E4068CL |
| Part Name | Cabin filter |
| OEM No. | 1987432330,90541317,91132367 |
| Maintenance | 1 month warranty |
| In stock | Contact for inventory |

Cabin filter Masuma - a guarantee of clean air inside the car. Masuma manufactures three types of cabin filters: nonwoven, electrostatic paper and activated carbon nonwoven. Masuma is a global brand of auto parts, components and consumables. The main specialization of the brand: resource parts for post-warranty service of Japanese cars. The company's strategy is to offer consumers the best ratio of reliability and cost of spare parts. All products are manufactured to order, technology and under the control of the parent company Masuma Auto Spare Parts Co., LTD (Tokyo, Japan) at dozens of modern factories located in East Asia.

SUITABLE FOR CAR MODELS DETAILS

| MASUMA | Brand | Car model | Chassis number | Year | Configuration |
|------------|-------|-----------|-----------------------|-----------|-------------------------------|
| MC-E4068CL | OPEL | VECTRA-C | 1.8L Z18XEL. LIFTBACK | 2002-2008 | Z18XEL. 1.8L Z18XEL. LIFTBACK |
| MC-E4068CL | OPEL | VECTRA-C | 2.0L Y20DTH. LIFTBACK | 2002-2008 | Y20DTH. 2.0L Y20DTH. LIFTBACK |
| MC-E4068CL | OPEL | VECTRA-C | 2.2L Y22DTR. LIFTBACK | 2002-2008 | Y22DTR. 2.2L Y22DTR. LIFTBACK |
| MC-E4068CL | OPEL | VECTRA-C | 1.6L Z16XE. LIFTBACK | 2002-2008 | Z16XE. 1.6L Z16XE. LIFTBACK |
| MC-E4068CL | OPEL | VECTRA-C | 1.8L Z18XE. LIFTBACK | 2002-2008 | Z18XE. 1.8L Z18XE. LIFTBACK |
| MC-E4068CL | OPEL | VECTRA-C | 2.2L Z22SE. LIFTBACK | 2002-2008 | Z22SE. 2.2L Z22SE. LIFTBACK |
| MC-E4068CL | OPEL | VECTRA-C | 1.8L Z18XEL. SEDAN | 2002-2008 | Z18XEL. 1.8L Z18XEL. SEDAN |
| MC-E4068CL | OPEL | VECTRA-C | 1.8L Z18XEL. WAGON | 2002-2008 | Z18XEL. 1.8L Z18XEL. WAGON |
| MC-E4068CL | OPEL | VECTRA-C | 2.0L Y20DTH. SEDAN | 2002-2008 | Y20DTH. 2.0L Y20DTH. SEDAN |
| MC-E4068CL | OPEL | VECTRA-C | 2.0L Y20DTH. WAGON | 2002-2008 | Y20DTH. 2.0L Y20DTH. WAGON |
| MC-E4068CL | OPEL | VECTRA-C | 2.2L Y22DTR. SEDAN | 2002-2008 | Y22DTR. 2.2L Y22DTR. SEDAN |
| MC-E4068CL | OPEL | VECTRA-C | 2.2L Y22DTR. WAGON | 2002-2008 | Y22DTR. 2.2L Y22DTR. WAGON |
| MC-E4068CL | OPEL | VECTRA-C | 1.6L Z16XE. SEDAN | 2002-2008 | Z16XE. 1.6L Z16XE. SEDAN |
| MC-E4068CL | OPEL | VECTRA-C | 1.6L Z16XE. WAGON | 2002-2008 | Z16XE. 1.6L Z16XE. WAGON |
| MC-E4068CL | OPEL | VECTRA-C | 1.8L Z18XE. SEDAN | 2002-2008 | Z18XE. 1.8L Z18XE. SEDAN |
| MC-E4068CL | OPEL | VECTRA-C | 1.8L Z18XE. WAGON | 2002-2008 | Z18XE. 1.8L Z18XE. WAGON |
| MC-E4068CL | OPEL | VECTRA-C | 2.2L Z22SE. SEDAN | 2002-2008 | Z22SE. 2.2L Z22SE. SEDAN |

Contact Supplier send an enquiry to
confirm suitable car

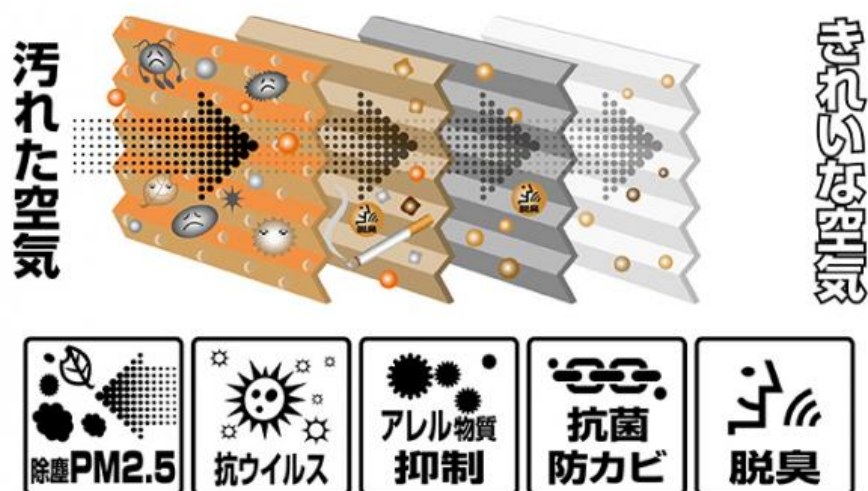
MC-E4068CL

MASUMA



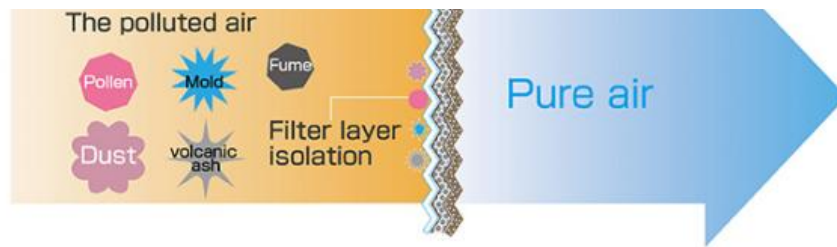
MASUMA

ACTIVATED CARBON AIR CONDITIONING
FILTER FOR REMOVING PM2.5
(SCHEMATIC DIAGRAM)



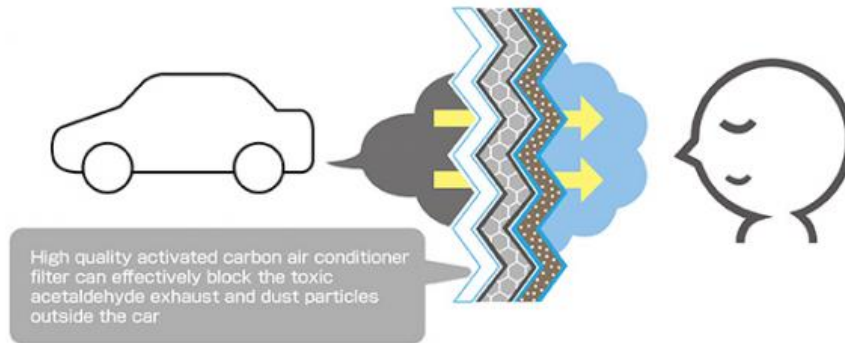
Effectively prevents allergenic pollen from entering the vehicle

High quality air conditioning filter can effectively filter cypress or cedar pollen, dust and particles, especially suitable for car owners with pollen allergy.



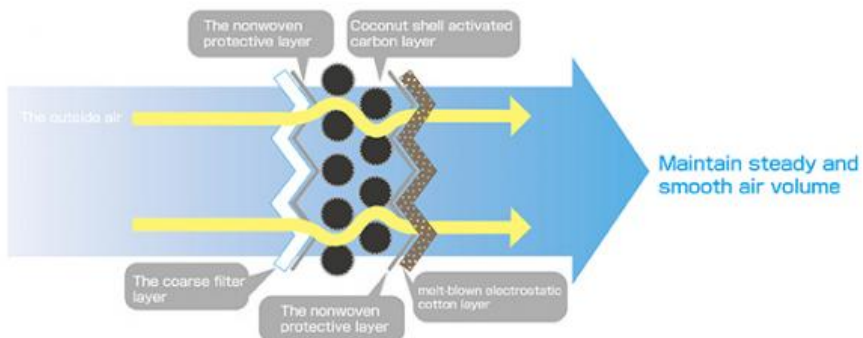
Effectively block the smell of industrial exhaust and automobile exhaust

The high quality activated carbon air conditioner filter can effectively block the bad smell caused by the difficult industrial exhaust gas and the toxic automobile exhaust in the traffic jam, so as to keep the fresh air inside the car at all times.



Air flows more steadily and more smoothly!

MASUMA high quality activated carbon air conditioning filter using coconut shell activated carbon, which can better remove odor and maintain the air in the car smooth and stable flow!



MASUMA

For the health of you and your family, it is recommended to ace the air conditioner filter every 5000 km.

CABIN FILTER



ALERT !!

Pollution sources that affect the air quality in the car.



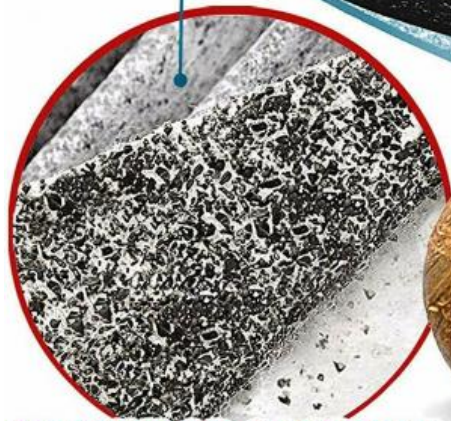
HIGH QUALITY MATERIALS

Longe fibre

Carbon media

Electrostatic paper

Activated carbon



GRANULAR COCONUT SHELL BASED



FUNCTION :

Filter dead leaves, pollen, dust and other particulate impurities in the air, PM2.5, remove odor, adsorb formaldehyde, purify the air and have strong antibacterial and antibacterial effects.



Remove odor



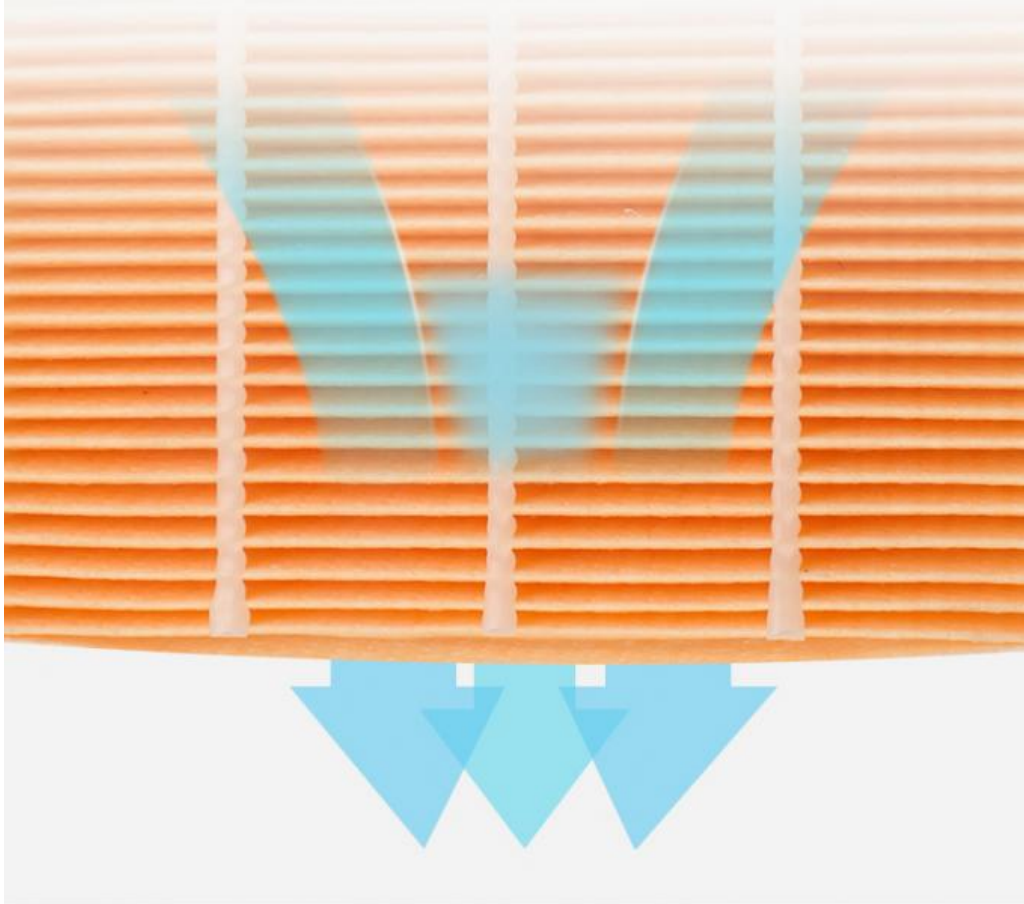
Absorb formaldehyde



Purify the air

AIR FILTRATION AND PURIFICATION

Effectively filter dust, fine particles, formaldehyde and other toxic gases.
Layer-by-layer filtration plays a role in air purification



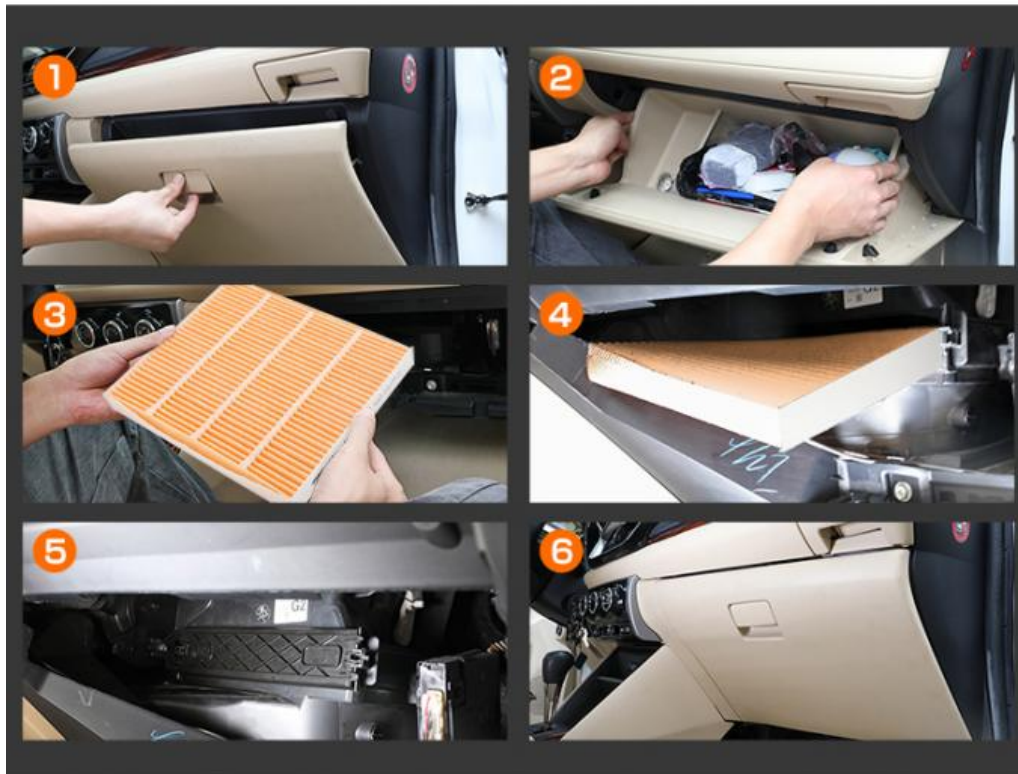
CUT OFF THE DIRTY AIR ENTERING THE CAR FROM THE SOURCE

The polluted air in the car comes from the air conditioner



EASY INSTALLATION

MASUMA Cabin filter install



MASUMA FILTER SERIES

/ PROVIDE CLEANING SOLUTIONS /

Air filter

Cabin filter

Oil filter

Fuel filter



MASUMA

Note:

MASUMA auto parts covered more than 900,000 different OEM numbers, [here only show few parts.](#)
Pls Contact us to check more and details information for you.

| Search For Car Brand Click) | Auto parts | Product List | Number of suitable car models |
|---|---------------------|-----------------------|-------------------------------|
| For Japanes Car: For Toyota For Honda For Nissan For Mazda For Lexus For Infiniti For Mitsubishi For Suzuki For Subaru For DAIHATSU For ISUZU For Fuso | Auto Engine Systems | Air Filters | 1215 |
| | | Fuel Filters | 255 |
| | | Oil Filters | 588 |
| | | Spark Plugs | 59 |
| | | Engine Mounts | 888 |
| | | Ignition Coils | 255 |
| | | Ignition Cable | 77 |
| | | Timing Chain Kit | 67 |
| | | Cylinder Head Gaskets | 223 |
| | | Ball Joints | 655 |
| | | Control Arms | 394 |
| | | Rubber Bushing | 685 |
| | | | |
| For Korean Car: For HYUNDAI For KIA | | | |

| | | | |
|--|---------------------------|---------------------------|------|
| | | Shock Absorber Springs | 153 |
| | | Shock Absorbers | 323 |
| | Auto Suspension Systems | Stabilizer Links | 453 |
| | | Suspension Strut Bearings | 110 |
| | | Brake Pads | 1966 |
| | | Brake Discs | 825 |
| | | Brake shoes | 220 |
| | Auto Brake Systems | Brake Cables | 216 |
| | | Brake Hoses | 707 |
| | | Tie Rod Ends | 345 |
| | | Tie Rods (Rack End) | 247 |
| | | Steering Gear Boots | 435 |
| | Auto Steering Systems | Steering Gears | 60 |
| | | Cabin Filters | 736 |
| | Air Conditioning Systems | C.V. Joints | 199 |
| | | C.V. Joint Boots | 157 |
| | | Tensioner & Belts | 1043 |
| | Auto Transmission Systems | Wheel Hubs | 103 |
| | | Antifreeze | 4 |
| | | Brake Lubricants | 2 |
| | | Engine Lubricants | 42 |
| | Fluid & Chemicals | Transmission Fluids | 15 |
| | | Other Auto Parts | 5074 |
| | | Tire Repair Tools | 57 |
| | | Auto Fastener & Clip | 1881 |
| | Other Auto Parts | Lug Nuts & Accessories | 233 |
| | | Other Vehicle Tools | 15 |

For Europe Car:

For Benz
For BMW
For Audi
For VW
For Porsche
For Skoda
For Renault
For Peugeot
For Volvo
For Alfa Romeo

For America Car:

For Ford
For OPEL
For Chevrolet

Other brand:

For Land Rover
For Jeep
For Ssangyong



MAIN CAR SERIES

Cover 90% Of JAPANESE And KOREA Cars



Corolla



Crown



Camry



Civic



Tiida



Accord



RX300



RAV4



Company Profile



[View more history >>](#)

MASUMA was founded in **1998 Japan**, integrates R&D, production, sales and operation as one. It has its own

wholly-owned subsidiary factory and joint venture production base in **GuangZhou China**, have an area of **30,000 sqm**, **500+ employees** in the company, the annual turnover to reach 55 million USD.

Masuma specializes in the design, development, manufacturing, sales and service of Japanese, German, American, Chinese and Korean auto parts. The current products include lubricating oil, transmission fluid, brake oil, brake pad, brake disc, filter, spark plug, ignition coil, ball joint, swing arm, shock absorber, belt, wiper, water tank cover and other series, over ten thousands of varieties, and products are sold to more than 100 countries and regions in the world.

MASUMA 1998

2011

Masuma

30,000

500

1

55



Manufacturing Technique



PRECISION

Automated machinery

100,000 pieces/day



TAKAMAZ-FEELER



BROTHER SPEEDIO



TOYO



Mitutoyo QC



NGATA



KAWATA

Exhibition

EXHIBITION



MASUMA Masuma (Guangzhou) International Trading Co., Ltd.

+8615323309608

msm@masuma.com

masumajp.com

No. 19, Liwu Road, Tanbu Town, Huadu District, Guangzhou