

MFC-2276 MASUMA Paper core Auto Engine Systems car oil filter 15274-99786 For Nissan NT500 Atleon

Our Product Introduction

for more products please visit us on masumajp.com

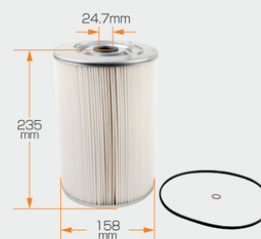
Basic Information

- Place of Origin: Guangdong, China
- Brand Name: MASUMA
- Minimum Order Quantity: 2 pieces
- Price: Negotiation
- Packaging Details: carton

MASUMA
 AUTO SPARE PARTS


Product Specification

- Model: NT500, Atleon, MAXITY
- Year: 2000-, 2013-, 2007-, 1999-2012
- Engine: 56.15, 35.15, 56.15, 35.15, 35.15 HD, 65.15, 75.18, 75.18 MTA, 150.45, 150.35
- OE NO.: 15274-99786
- Car Fitment: Nissan, RENAULT TRUCKS
- Reference NO.: 7584032, P 9271, ML4519, 50014112, OX 415 D ECO, A210030, MLE 1532, 4112-OX, OX 415 D, V46-9707, AC-8055, AC6288E, J FO-194, EO-1804, EO-1801, FO-00060, MD-399, LO-204, SH 4799, 10-01-194
- Warranty: 6 Months
- Car Model: CELICA
- Size: 7*7*11.7 Cm
- MASUMA NO.: MFC-2276
- Part Name: Paper Core Oil Filter
- Delivery Time: 20 Days

MFC-2276
MASUMA


More Images

MASUMA

MASUMA

MASUMA


Product Description



Product Description

MASUMA No.	MFC-2276
Part Name	Oil filter
OEM No.	15274-99786
Maintenance	1 month warranty
In stock	Contact for inventory

Masuma Oil Filters are manufactured to exacting OEM filter factory specifications. The filter element is a folded paper block with a high packing density. The design of the filter includes two important valves: anti-drain (reverse), which protects the motor from oil starvation at start-up, and bypass (bypass), which provides oil directly if it is impossible to pump it through the filter. Masuma oil filters provide complete oil cleaning from solid particles, sludge and wear products that are dangerous for rubbing engine parts. Masuma is a global brand of auto parts, components and consumables. The main specialization of the brand: resource parts for post-warranty service of Japanese cars. The company's strategy is to offer consumers the best ratio of reliability and cost of spare parts. All products are manufactured to order, technology and under the control of the parent company Masuma Auto Spare Parts Co., LTD (Tokyo, Japan) at dozens of modern factories located in East Asia.

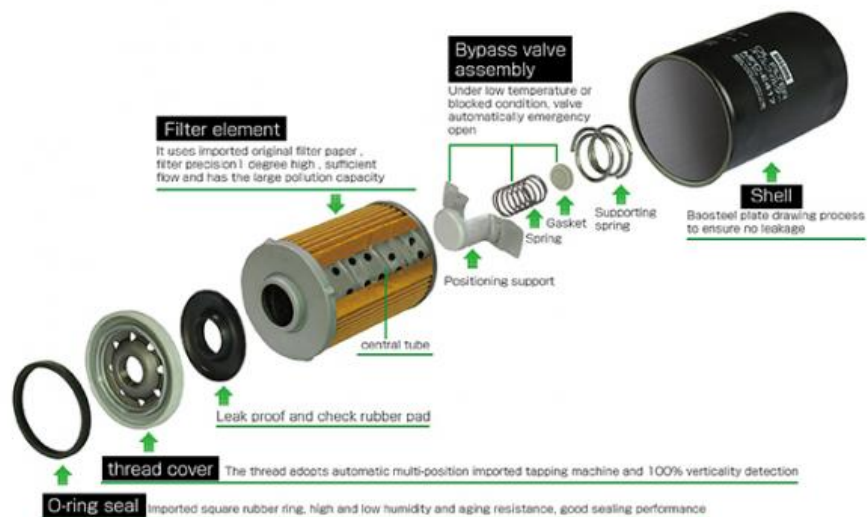


MFC-2276

MASUMA



MASUMA LUBE SPIN-ON FILTER (SCHEMATIC DIAGRAM)



MASUMA

AUTO SPARE PARTS

— FILTER —



PREMIUM AUTO PARTS SOURCE FACTORY

100000+
OE Numbers

22 Years
Experience

MASUMA has 103 kinds of auto parts products, spark plugs, brake pads, and fuel pumps, etc., and we have products suitable for various car models.

The dangers of not changing the filter in time!!

Engine work requires the lubrication of oil. If the impurities in the oil are not filtered into the cylinder, the aging of the piston group and the cylinder will be accelerated.



Cylinder fray



Petrol blocked



Burn oil cylinder



Reduced engine power



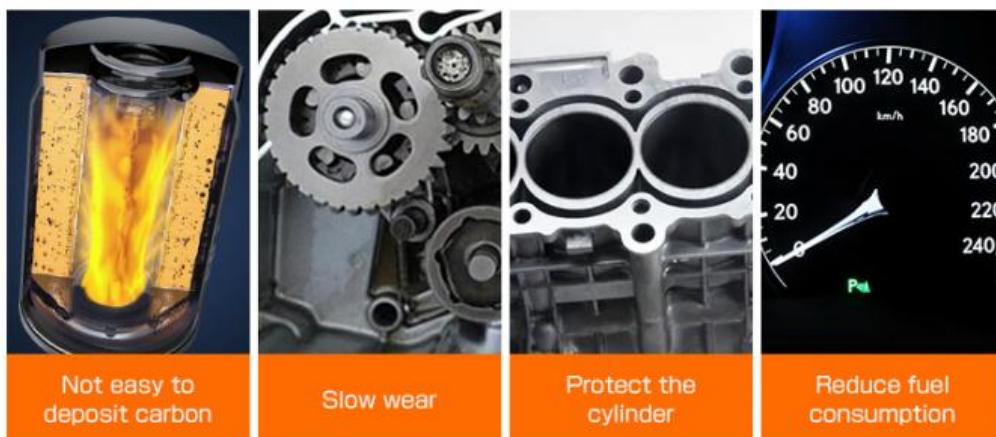
Increased fuel consumption



Make noise

DO YOU NEED SUCH A FILTER ?

/ HANDLE ALL CHALLENGES WITH EASE /



The function of the oil filter is to filter impurities, so it should be replaced at the same time as the oil. If it is not replaced in time, the oil will not be effectively filtered, which will lead to accelerated wear of the internal parts of the engine due to impurities in the oil.

WORKING PRINCIPLE :

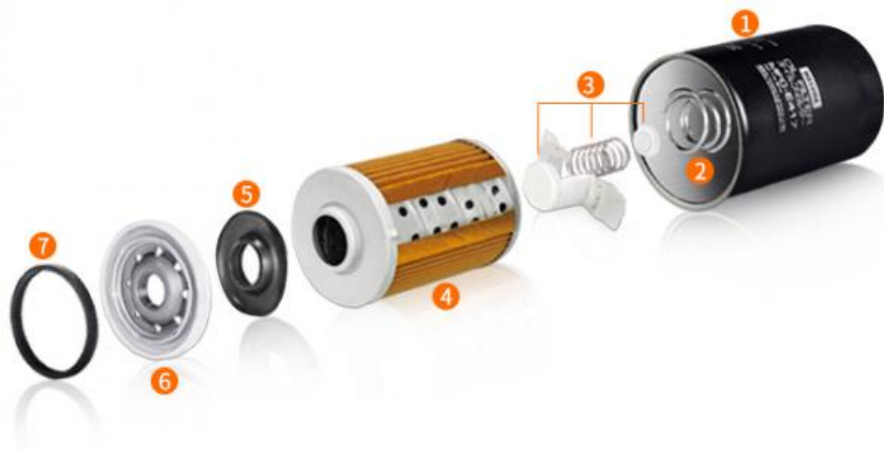
Filter impurities, dirt, etc. in the oil, provide reliable lubricating oil for the engine, reduce wear, reduce wear and prolong engine life.



Oil filter

Product Structure :

- The shell uses 0.5MM electrolytic plate, which is durable and not easy to be damaged.
- Bypass valve and check valve design to ensure continuous supply of oil.
- Adhesive-filled double lock seam can withstand pressures up to 300 p.s.i
- Multi-directional sealing ring ensures that the oil seal does not leak and can be quickly disassembled.



- | | | | |
|----------|-------------------------------|------------------|----------|
| 1 Shell | 3 Bypass valve | 5 Rubber gasket | 7 Gasket |
| 2 Spring | 4 Filter paper+Metal Intranet | 6 Threaded cover | |

Use high-quality cellulose filter paper.

Long-term guarantee of oil clean



Bypass valve device design, keep the maintain oil supply stability.

Bypass valve :

It is ensured that the oil in many cases is supplied to the bypass valve in the following cases, so as to ensure that a sufficient amount of oil reaches the surface of the engine parts to reduce friction.

- Oil is viscous in cold start or low temperature conditions.
- Exceeds the replacement cycle and the filter element is severely blocked.

Check valve :

Prevents lubrication when the engine is shut down again the oil in the system is emptied to ensure that when the engine starts quickly supply oil when moving.



MASUMA FILTER SERIES

/ PROVIDE CLEANING SOLUTIONS /

Air filter

Cabin filter

Oil filter

Fuel filter



MASUMA

Note:

MASUMA auto parts covered more than 900,000 different OEM numbers, [here only show few parts.](#)
Pls Contact us to check more and details information for you.

Search For Car Brand (Click)	Auto parts	Product List	Number of suitable car models
For Japanes Car: For Toyota For Honda For Nissan For Mazda For Lexus For Infiniti For Mitsubishi For Suzuki For Subaru For DAIHATSU For ISUZU For Fuso	Auto Engine Systems	Air Filters	1215
		Fuel Filters	255
		Oil Filters	588
		Spark Plugs	59
		Engine Mounts	888
		Ignition Coils	255
		Ignition Cable	77
		Timing Chain Kit	67
		Cylinder Head Gaskets	223
		Ball Joints	655
		Control Arms	394
For Korean Car:			

For HYUNDAI		Rubber Bushing	685
For KIA		Shock Absorber Springs	153
	Auto Suspension Systems	Shock Absorbers	323
For Europe Car:		Stabilizer Links	453
For Benz		Suspension Strut	110
For BMW		Bearings	
For Audi		Brake Pads	1966
For VW			
For Porsche		Brake Discs	825
For Skoda		Brake shoes	220
For Renault			
For Peugeot	Auto Brake Systems	Brake Cables	216
For Volvo		Brake Hoses	707
For Alfa Romeo		Tie Rod Ends	345
For America Car:		Tie Rods (Rack End)	247
For Ford	Auto Steering Systems	Steering Gear Boots	435
For OPEL		Steering Gears	60
For Chevrolet	Air Conditioning Systems	Cabin Filters	736
		C.V. Joints	199
Other brand:		C.V. Joint Boots	157
For Land Rover	Auto Transmission Systems	Tensioner & Belts	1043
For Jeep		Wheel Hubs	103
For Ssangyong		Antifreeze	4
		Brake Lubricants	2
	Fluid & Chemicals	Engine Lubricants	42
		Transmission Fluids	15
		Other Auto Parts	5074
		Tire Repair Tools	57
		Auto Fastener & Clip	1881
	Other Auto Parts	Lug Nuts & Accessories	233
		Other Vehicle Tools	15





Company Profile



[View more history >>](#)

MASUMA was founded in **1998 Japan**, integrates R&D, production, sales and operation as one. It has its own

wholly-owned subsidiary factory and joint venture production base in **GuangZhou China**, have an area of **30,000 sqm**, **500+ employees** in the company, the annual turnover to reach 55 million USD.

Masuma specializes in the design, development, manufacturing, sales and service of Japanese, German, American, Chinese and Korean auto parts. The current products include lubricating oil, transmission fluid, brake oil, brake pad, brake disc, filter, spark plug, ignition coil, ball joint, swing arm, shock absorber, belt, wiper, water tank cover and other series, over ten thousands of varieties, and products are sold to more than 100 countries and regions in the world.

MASUMA 1998

2011

Masuma

30,000

500

1

55



Manufacturing Technique



PRECISION

Automated machinery

100,000 pieces/day



TAKAMAZ-FEELER



BROTHER SPEEDIO



TOYO



Mitutoyo QC



NGATA



KAWATA

Exhibition

EXHIBITION



MASUMA Masuma (Guangzhou) International Trading Co., Ltd.

+8615323309608

msm@masuma.com

masumajp.com

No. 19, Liwu Road, Tanbu Town, Huadu District, Guangzhou