

## MFC-2016 MASUMA Oil Filter 26320-2F000 26320-2F010 26320-2F100 for HYUNDAI IX35 2015-

Our Product Introduction

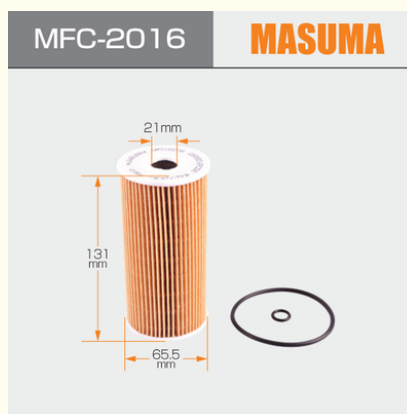
### Basic Information

- Place of Origin: Guangdong, China
- Brand Name: MASUMA
- Minimum Order Quantity: 2 pieces
- Price: Negotiation
- Packaging Details: carton



### Product Specification

- Model: TUCSON (TL)
- Engine: 2.0 CRDi All-wheel Drive
- Year: 2015-, 2009-2020
- OE NO.: 26320-2F000, 26320-2F010, 26320-2F100
- Car Fitment: Hyundai
- Reference NO.: E822HD315, LA500, SH4083P, OX377DECO, S 5166 PE, 28143220003, P7156, IFL3K07
- Warranty: 6 Months
- Car Model: CELICA
- Size: 7.5\*7.5\*15 Cm
- MASUMA NO.: MFC-2016
- Part Name: Paper Core Oil Filter
- Delivery Time: 30 Days
- In Stock: No
- MOQ: 200 Pieces



### More Images



for more products please visit us on [masumajp.com](http://masumajp.com)

## Product Description

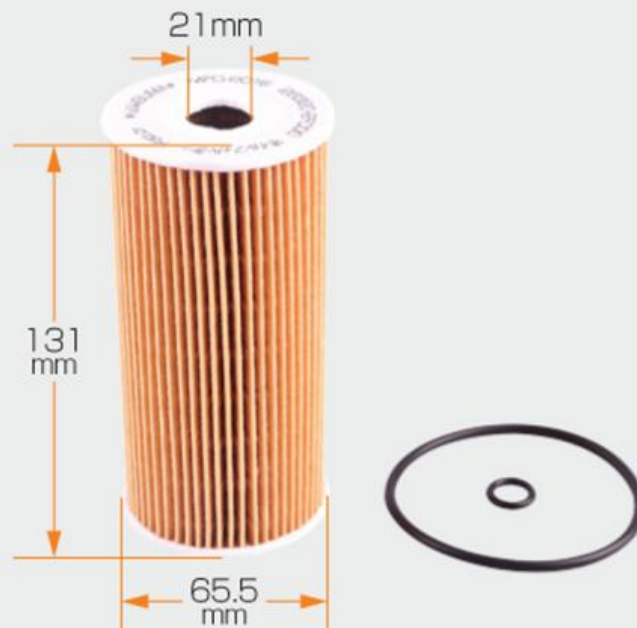


### Product Description

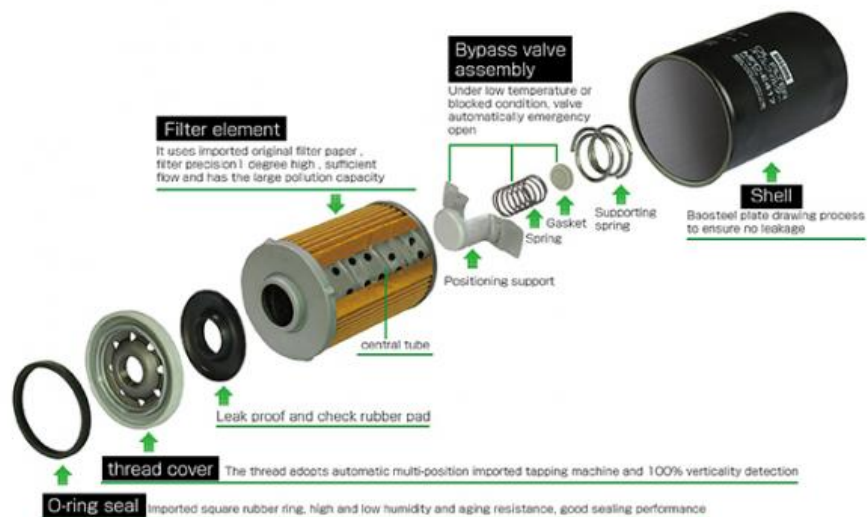
<b>MASUMA No.</b>	MFC-2016
<b>Part Name</b>	Oil filter
<b>OEM No.</b>	26320-2F000
<b>Maintenance</b>	1 month warranty
<b>In stock</b>	Contact for inventory

Masuma Oil Filters are manufactured to exacting OEM filter factory specifications. The filter element is a folded paper block with a high packing density. The design of the filter includes two important valves: anti-drain (reverse), which protects the motor from oil starvation at start-up, and bypass (bypass), which provides oil directly if it is impossible to pump it through the filter. Masuma oil filters provide complete oil cleaning from solid particles, sludge and wear products that are dangerous for rubbing engine parts. Masuma is a global brand of auto parts, components and consumables. The main specialization of the brand: resource parts for post-warranty service of Japanese cars. The company's strategy is to offer consumers the best ratio of reliability and cost of spare parts. All products are manufactured to order, technology and under the control of the parent company Masuma Auto Spare Parts Co., LTD (Tokyo, Japan) at dozens of modern factories located in East Asia.





## MASUMA LUBE SPIN-ON FILTER (SCHEMATIC DIAGRAM)



# MASUMA

AUTO SPARE PARTS

— FILTER —



**PREMIUM AUTO PARTS SOURCE FACTORY**

**100000+**  
OE Numbers

**22** Years  
Experience

MASUMA has 103 kinds of auto parts products, spark plugs, brake pads, and fuel pumps, etc., and we have products suitable for various car models.



# The dangers of not changing the filter in time!!

Engine work requires the lubrication of oil. If the impurities in the oil are not filtered into the cylinder, the aging of the piston group and the cylinder will be accelerated.



Cylinder fray



Petrol blocked



Burn oil cylinder



Reduced engine power



Increased fuel consumption



Make noise

# DO YOU NEED SUCH A FILTER ?

/ HANDLE ALL CHALLENGES WITH EASE /



Not easy to  
deposit carbon



Slow wear



Protect the  
cylinder



Reduce fuel  
consumption

The function of the oil filter is to filter impurities, so it should be replaced at the same time as the oil. If it is not replaced in time, the oil will not be effectively filtered, which will lead to accelerated wear of the internal parts of the engine due to impurities in the oil.

## WORKING PRINCIPLE :

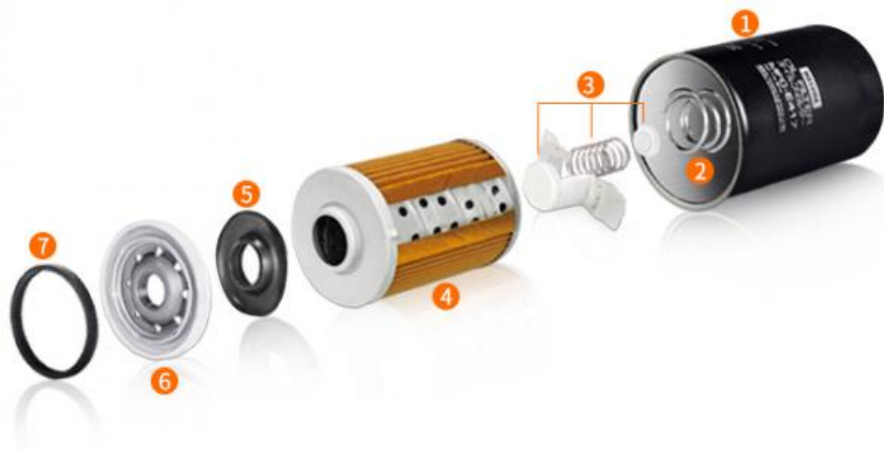
Filter impurities, dirt, etc. in the oil, provide reliable lubricating oil for the engine, reduce wear, reduce wear and prolong engine life.



# Oil filter

## Product Structure :

- The shell uses 0.5MM electrolytic plate, which is durable and not easy to be damaged.
- Bypass valve and check valve design to ensure continuous supply of oil.
- Adhesive-filled double lock seam can withstand pressures up to 300 p.s.i
- Multi-directional sealing ring ensures that the oil seal does not leak and can be quickly disassembled.



- |          |                               |                  |          |
|----------|-------------------------------|------------------|----------|
| 1 Shell  | 3 Bypass valve                | 5 Rubber gasket  | 7 Gasket |
| 2 Spring | 4 Filter paper+Metal Intranet | 6 Threaded cover |          |

## Use high-quality cellulose filter paper.

Long-term guarantee of oil clean





## Bypass valve device design, keep the maintain oil supply stability.

### Bypass valve :

It is ensured that the oil in many cases is supplied to the bypass valve in the following cases, so as to ensure that a sufficient amount of oil reaches the surface of the engine parts to reduce friction.

- Oil is viscous in cold start or low temperature conditions.
- Exceeds the replacement cycle and the filter element is severely blocked.

### Check valve :

Prevents lubrication when the engine is shut down again the oil in the system is emptied to ensure that when the engine starts quickly supply oil when moving.



# MASUMA FILTER SERIES

/ PROVIDE CLEANING SOLUTIONS /

Air filter

Cabin filter

Oil filter

Fuel filter



## MASUMA

### Note:

MASUMA auto parts covered more than 900,000 different OEM numbers, [here only show few parts.](#)  
Pls Contact us to check more and details information for you.

Search For Car Brand Click)	Auto parts	Product List	Number of suitable car models
		Air Filters	1215
<b>For Japanes Car:</b>		Fuel Filters	255
For Toyota		Oil Filters	588
For Honda		Spark Plugs	59
For Nissan		Engine Mounts	888
For Mazda		Ignition Coils	255
For Lexus		Ignition Cable	77
For Infiniti		Timing Chain Kit	67
For Mitsubishi	Auto Engine Systems	Cylinder Head Gaskets	223
For Suzuki		Ball Joints	655
For Subaru		Control Arms	394
For DAIHATSU			
For ISUZU			
For Fuso			
<b>For Korean Car:</b>			

For HYUNDAI		Rubber Bushing	685
For KIA		Shock Absorber Springs	153
	Auto Suspension Systems	Shock Absorbers	323
<b>For Europe Car:</b>		Stabilizer Links	453
For Benz		Suspension Strut Bearings	110
For BMW		Brake Pads	1966
For Audi		Brake Discs	825
For VW		Brake shoes	220
For Porsche		Brake Cables	216
For Skoda	Auto Brake Systems	Brake Hoses	707
For Renault		Tie Rod Ends	345
For Peugeot		Tie Rods (Rack End)	247
For Volvo		Steering Gear Boots	435
For Alfa Romeo		Steering Gears	60
<b>For America Car:</b>	Auto Steering Systems	Cabin Filters	736
For Ford		C.V. Joints	199
For OPEL	Air Conditioning Systems	C.V. Joint Boots	157
For Chevrolet		Tensioner & Belts	1043
	Auto Transmission Systems	Wheel Hubs	103
<b>Other brand:</b>		Antifreeze	4
For Land Rover		Brake Lubricants	2
For Jeep		Engine Lubricants	42
For Ssangyong	Fluid & Chemicals	Transmission Fluids	15
		Other Auto Parts	5074
		Tire Repair Tools	57
		Auto Fastener & Clip	1881
	Other Auto Parts	Lug Nuts & Accessories	233
		Other Vehicle Tools	15



## MAIN CAR SERIES

Cover 90% Of JAPANESE And KOREA Cars



**Corolla**



**Crown**



**Camry**



**Civic**



**Tiida**



**Accord**



**RX300**



**RAV4**



## Company Profile



[View more history >>](#)

**MASUMA** was founded in **1998 Japan**, integrates R&D, production, sales and operation as one. It has its own

wholly-owned subsidiary factory and joint venture production base in **GuangZhou China**, have an area of **30,000 sqm**, **500+ employees** in the company, the annual turnover to reach 55 million USD.

Masuma specializes in the design, development, manufacturing, sales and service of Japanese, German, American, Chinese and Korean auto parts. The current products include lubricating oil, transmission fluid, brake oil, brake pad, brake disc, filter, spark plug, ignition coil, ball joint, swing arm, shock absorber, belt, wiper, water tank cover and other series, over ten thousands of varieties, and products are sold to more than 100 countries and regions in the world.

**MASUMA** 1998

2011

Masuma

30,000

500

1

55





## Manufacturing Technique



### PRECISION

Automated machinery

100,000 pieces/day



TAKAMAZ-FEELER



BROTHER SPEEDIO



TOYO



Mitutoyo QC



NGATA



KAWATA

## Exhibition



# EXHIBITION



**MASUMA** Masuma (Guangzhou) International Trading Co., Ltd.

+8615323309608

msm@masuma.com

masumajp.com

No. 19, Liwu Road, Tanbu Town, Huadu District, Guangzhou