

MASUMA NO. MFC-1912 Spin-on Auto Parts engine oil filters for MAZDA **119305-35151**

Our Product Introduction

Basic Information

- Place of Origin: Guangdong, China
- Brand Name: MASUMA
- Minimum Order Quantity: 2 pieces
- Price: Negotiation
- Packaging Details: carton

MASUMA
 AUTO SPARE PARTS


Product Specification

- Model: INSIGHT (ZE), RIO Saloon (DC_), RIO Estate (DC), CARNIVAL II (GQ), RIO II (JB), SPORTAGE (K00), RIO II Saloon (JB), MPV II (LW), MX-5 I (NA), 929 III (HC), XEDOS 9 (TA), 323 F IV (BG), MX-5 II (NB), 626 II (GC), 626 II Hatchback (GC), 323 S IV (BG), 323 II
- Year: 1984-1994, 1979-1984, 2011-, 2003-2011, 2001-2006, 1994-2004, 1998-2004, 2005-, 2005-, 2007-, 2000-2005, 1999-2007, 2006-2012, 2000-2005, 2009-, 2010-, 2008-, 2000-2006, 2005-, 1982-1987, 1987-1991, 1982-1987, 1989-1998, 1985-1991, 2015-, 1999-2006, 1991-1
- Engine: 1600, 3.5, 2.4 MIVEC (NA4W), 1.5 16V, 1.6 CVVT, 2.4 Mivec 4WD (CW5W), 2.0 I, 2.0 I 4WD, 2.4 4WD, 1.8 MPI, 1.5 16V, 1.6 16V, 3.7, 1.0 Hybrid (ZE1, ZE18), 1.6 DIG-T, 1.6 DIG-T 4x4, 2.5 (HY0C, HY0N), 2.5 4x4 (HY0C, HY0N), 2.0 16V (BR0C, BR0K, CR0C, CR0K), 1.3

MFC-1912
MASUMA


More Images

Masuma	Brand	Car model	Chassis number	Year	Distribution
MFC-1912	MASUMA	MAZDA	1.6 (NA4W) 1600cc	1984-1994	MAZDA 1.6 (NA4W) 1600cc
MFC-1912	MASUMA	MAZDA	1.8 (NA4W) 1800cc	1984-1994	MAZDA 1.8 (NA4W) 1800cc
MFC-1912	MASUMA	MAZDA	2.0 (NA4W) 2000cc	1984-1994	MAZDA 2.0 (NA4W) 2000cc
MFC-1912	MASUMA	MAZDA	2.4 (NA4W) 2400cc	1984-1994	MAZDA 2.4 (NA4W) 2400cc
MFC-1912	MASUMA	MAZDA	3.0 (NA4W) 3000cc	1984-1994	MAZDA 3.0 (NA4W) 3000cc
MFC-1912	MASUMA	MAZDA	3.5 (NA4W) 3500cc	1984-1994	MAZDA 3.5 (NA4W) 3500cc
MFC-1912	MASUMA	MAZDA	4.0 (NA4W) 4000cc	1984-1994	MAZDA 4.0 (NA4W) 4000cc
MFC-1912	MASUMA	MAZDA	4.5 (NA4W) 4500cc	1984-1994	MAZDA 4.5 (NA4W) 4500cc
MFC-1912	MASUMA	MAZDA	5.0 (NA4W) 5000cc	1984-1994	MAZDA 5.0 (NA4W) 5000cc
MFC-1912	MASUMA	MAZDA	5.5 (NA4W) 5500cc	1984-1994	MAZDA 5.5 (NA4W) 5500cc
MFC-1912	MASUMA	MAZDA	6.0 (NA4W) 6000cc	1984-1994	MAZDA 6.0 (NA4W) 6000cc
MFC-1912	MASUMA	MAZDA	6.5 (NA4W) 6500cc	1984-1994	MAZDA 6.5 (NA4W) 6500cc
MFC-1912	MASUMA	MAZDA	7.0 (NA4W) 7000cc	1984-1994	MAZDA 7.0 (NA4W) 7000cc
MFC-1912	MASUMA	MAZDA	7.5 (NA4W) 7500cc	1984-1994	MAZDA 7.5 (NA4W) 7500cc
MFC-1912	MASUMA	MAZDA	8.0 (NA4W) 8000cc	1984-1994	MAZDA 8.0 (NA4W) 8000cc
MFC-1912	MASUMA	MAZDA	8.5 (NA4W) 8500cc	1984-1994	MAZDA 8.5 (NA4W) 8500cc
MFC-1912	MASUMA	MAZDA	9.0 (NA4W) 9000cc	1984-1994	MAZDA 9.0 (NA4W) 9000cc
MFC-1912	MASUMA	MAZDA	9.5 (NA4W) 9500cc	1984-1994	MAZDA 9.5 (NA4W) 9500cc
MFC-1912	MASUMA	MAZDA	10.0 (NA4W) 10000cc	1984-1994	MAZDA 10.0 (NA4W) 10000cc
MFC-1912	MASUMA	MAZDA	10.5 (NA4W) 10500cc	1984-1994	MAZDA 10.5 (NA4W) 10500cc
MFC-1912	MASUMA	MAZDA	11.0 (NA4W) 11000cc	1984-1994	MAZDA 11.0 (NA4W) 11000cc
MFC-1912	MASUMA	MAZDA	11.5 (NA4W) 11500cc	1984-1994	MAZDA 11.5 (NA4W) 11500cc
MFC-1912	MASUMA	MAZDA	12.0 (NA4W) 12000cc	1984-1994	MAZDA 12.0 (NA4W) 12000cc
MFC-1912	MASUMA	MAZDA	12.5 (NA4W) 12500cc	1984-1994	MAZDA 12.5 (NA4W) 12500cc
MFC-1912	MASUMA	MAZDA	13.0 (NA4W) 13000cc	1984-1994	MAZDA 13.0 (NA4W) 13000cc
MFC-1912	MASUMA	MAZDA	13.5 (NA4W) 13500cc	1984-1994	MAZDA 13.5 (NA4W) 13500cc
MFC-1912	MASUMA	MAZDA	14.0 (NA4W) 14000cc	1984-1994	MAZDA 14.0 (NA4W) 14000cc
MFC-1912	MASUMA	MAZDA	14.5 (NA4W) 14500cc	1984-1994	MAZDA 14.5 (NA4W) 14500cc
MFC-1912	MASUMA	MAZDA	15.0 (NA4W) 15000cc	1984-1994	MAZDA 15.0 (NA4W) 15000cc
MFC-1912	MASUMA	MAZDA	15.5 (NA4W) 15500cc	1984-1994	MAZDA 15.5 (NA4W) 15500cc
MFC-1912	MASUMA	MAZDA	16.0 (NA4W) 16000cc	1984-1994	MAZDA 16.0 (NA4W) 16000cc
MFC-1912	MASUMA	MAZDA	16.5 (NA4W) 16500cc	1984-1994	MAZDA 16.5 (NA4W) 16500cc
MFC-1912	MASUMA	MAZDA	17.0 (NA4W) 17000cc	1984-1994	MAZDA 17.0 (NA4W) 17000cc
MFC-1912	MASUMA	MAZDA	17.5 (NA4W) 17500cc	1984-1994	MAZDA 17.5 (NA4W) 17500cc
MFC-1912	MASUMA	MAZDA	18.0 (NA4W) 18000cc	1984-1994	MAZDA 18.0 (NA4W) 18000cc
MFC-1912	MASUMA	MAZDA	18.5 (NA4W) 18500cc	1984-1994	MAZDA 18.5 (NA4W) 18500cc
MFC-1912	MASUMA	MAZDA	19.0 (NA4W) 19000cc	1984-1994	MAZDA 19.0 (NA4W) 19000cc
MFC-1912	MASUMA	MAZDA	19.5 (NA4W) 19500cc	1984-1994	MAZDA 19.5 (NA4W) 19500cc
MFC-1912	MASUMA	MAZDA	20.0 (NA4W) 20000cc	1984-1994	MAZDA 20.0 (NA4W) 20000cc
MFC-1912	MASUMA	MAZDA	20.5 (NA4W) 20500cc	1984-1994	MAZDA 20.5 (NA4W) 20500cc
MFC-1912	MASUMA	MAZDA	21.0 (NA4W) 21000cc	1984-1994	MAZDA 21.0 (NA4W) 21000cc
MFC-1912	MASUMA	MAZDA	21.5 (NA4W) 21500cc	1984-1994	MAZDA 21.5 (NA4W) 21500cc
MFC-1912	MASUMA	MAZDA	22.0 (NA4W) 22000cc	1984-1994	MAZDA 22.0 (NA4W) 22000cc
MFC-1912	MASUMA	MAZDA	22.5 (NA4W) 22500cc	1984-1994	MAZDA 22.5 (NA4W) 22500cc
MFC-1912	MASUMA	MAZDA	23.0 (NA4W) 23000cc	1984-1994	MAZDA 23.0 (NA4W) 23000cc
MFC-1912	MASUMA	MAZDA	23.5 (NA4W) 23500cc	1984-1994	MAZDA 23.5 (NA4W) 23500cc
MFC-1912	MASUMA	MAZDA	24.0 (NA4W) 24000cc	1984-1994	MAZDA 24.0 (NA4W) 24000cc
MFC-1912	MASUMA	MAZDA	24.5 (NA4W) 24500cc	1984-1994	MAZDA 24.5 (NA4W) 24500cc
MFC-1912	MASUMA	MAZDA	25.0 (NA4W) 25000cc	1984-1994	MAZDA 25.0 (NA4W) 25000cc
MFC-1912	MASUMA	MAZDA	25.5 (NA4W) 25500cc	1984-1994	MAZDA 25.5 (NA4W) 25500cc
MFC-1912	MASUMA	MAZDA	26.0 (NA4W) 26000cc	1984-1994	MAZDA 26.0 (NA4W) 26000cc
MFC-1912	MASUMA	MAZDA	26.5 (NA4W) 26500cc	1984-1994	MAZDA 26.5 (NA4W) 26500cc
MFC-1912	MASUMA	MAZDA	27.0 (NA4W) 27000cc	1984-1994	MAZDA 27.0 (NA4W) 27000cc
MFC-1912	MASUMA	MAZDA	27.5 (NA4W) 27500cc	1984-1994	MAZDA 27.5 (NA4W) 27500cc
MFC-1912	MASUMA	MAZDA	28.0 (NA4W) 28000cc	1984-1994	MAZDA 28.0 (NA4W) 28000cc
MFC-1912	MASUMA	MAZDA	28.5 (NA4W) 28500cc	1984-1994	MAZDA 28.5 (NA4W) 28500cc
MFC-1912	MASUMA	MAZDA	29.0 (NA4W) 29000cc	1984-1994	MAZDA 29.0 (NA4W) 29000cc
MFC-1912	MASUMA	MAZDA	29.5 (NA4W) 29500cc	1984-1994	MAZDA 29.5 (NA4W) 29500cc
MFC-1912	MASUMA	MAZDA	30.0 (NA4W) 30000cc	1984-1994	MAZDA 30.0 (NA4W) 30000cc
MFC-1912	MASUMA	MAZDA	30.5 (NA4W) 30500cc	1984-1994	MAZDA 30.5 (NA4W) 30500cc
MFC-1912	MASUMA	MAZDA	31.0 (NA4W) 31000cc	1984-1994	MAZDA 31.0 (NA4W) 31000cc
MFC-1912	MASUMA	MAZDA	31.5 (NA4W) 31500cc	1984-1994	MAZDA 31.5 (NA4W) 31500cc
MFC-1912	MASUMA	MAZDA	32.0 (NA4W) 32000cc	1984-1994	MAZDA 32.0 (NA4W) 32000cc
MFC-1912	MASUMA	MAZDA	32.5 (NA4W) 32500cc	1984-1994	MAZDA 32.5 (NA4W) 32500cc
MFC-1912	MASUMA	MAZDA	33.0 (NA4W) 33000cc	1984-1994	MAZDA 33.0 (NA4W) 33000cc
MFC-1912	MASUMA	MAZDA	33.5 (NA4W) 33500cc	1984-1994	MAZDA 33.5 (NA4W) 33500cc
MFC-1912	MASUMA	MAZDA	34.0 (NA4W) 34000cc	1984-1994	MAZDA 34.0 (NA4W) 34000cc
MFC-1912	MASUMA	MAZDA	34.5 (NA4W) 34500cc	1984-1994	MAZDA 34.5 (NA4W) 34500cc
MFC-1912	MASUMA	MAZDA	35.0 (NA4W) 35000cc	1984-1994	MAZDA 35.0 (NA4W) 35000cc
MFC-1912	MASUMA	MAZDA	35.5 (NA4W) 35500cc	1984-1994	MAZDA 35.5 (NA4W) 35500cc
MFC-1912	MASUMA	MAZDA	36.0 (NA4W) 36000cc	1984-1994	MAZDA 36.0 (NA4W) 36000cc
MFC-1912	MASUMA	MAZDA	36.5 (NA4W) 36500cc	1984-1994	MAZDA 36.5 (NA4W) 36500cc
MFC-1912	MASUMA	MAZDA	37.0 (NA4W) 37000cc	1984-1994	MAZDA 37.0 (NA4W) 37000cc
MFC-1912	MASUMA	MAZDA	37.5 (NA4W) 37500cc	1984-1994	MAZDA 37.5 (NA4W) 37500cc
MFC-1912	MASUMA	MAZDA	38.0 (NA4W) 38000cc	1984-1994	MAZDA 38.0 (NA4W) 38000cc
MFC-1912	MASUMA	MAZDA	38.5 (NA4W) 38500cc	1984-1994	MAZDA 38.5 (NA4W) 38500cc
MFC-1912	MASUMA	MAZDA	39.0 (NA4W) 39000cc	1984-1994	MAZDA 39.0 (NA4W) 39000cc
MFC-1912	MASUMA	MAZDA	39.5 (NA4W) 39500cc	1984-1994	MAZDA 39.5 (NA4W) 39500cc
MFC-1912	MASUMA	MAZDA	40.0 (NA4W) 40000cc	1984-1994	MAZDA 40.0 (NA4W) 40000cc
MFC-1912	MASUMA	MAZDA	40.5 (NA4W) 40500cc	1984-1994	MAZDA 40.5 (NA4W) 40500cc
MFC-1912	MASUMA	MAZDA	41.0 (NA4W) 41000cc	1984-1994	MAZDA 41.0 (NA4W) 41000cc
MFC-1912	MASUMA	MAZDA	41.5 (NA4W) 41500cc	1984-1994	MAZDA 41.5 (NA4W) 41500cc
MFC-1912	MASUMA	MAZDA	42.0 (NA4W) 42000cc	1984-1994	MAZDA 42.0 (NA4W) 42000cc
MFC-1912	MASUMA	MAZDA	42.5 (NA4W) 42500cc	1984-1994	MAZDA 42.5 (NA4W) 42500cc
MFC-1912	MASUMA	MAZDA	43.0 (NA4W) 43000cc	1984-1994	MAZDA 43.0 (NA4W) 43000cc
MFC-1912	MASUMA	MAZDA	43.5 (NA4W) 43500cc	1984-1994	MAZDA 43.5 (NA4W) 43500cc
MFC-1912	MASUMA	MAZDA	44.0 (NA4W) 44000cc	1984-1994	MAZDA 44.0 (NA4W) 44000cc
MFC-1912	MASUMA	MAZDA	44.5 (NA4W) 44500cc	1984-1994	MAZDA 44.5 (NA4W) 44500cc
MFC-1912	MASUMA	MAZDA	45.0 (NA4W) 45000cc	1984-1994	MAZDA 45.0 (NA4W) 45000cc
MFC-1912	MASUMA	MAZDA	45.5 (NA4W) 45500cc	1984-1994	MAZDA 45.5 (NA4W) 45500cc
MFC-1912	MASUMA	MAZDA	46.0 (NA4W) 46000cc	1984-1994	MAZDA 46.0 (NA4W) 46000cc
MFC-1912	MASUMA	MAZDA	46.5 (NA4W) 46500cc	1984-1994	MAZDA 46.5 (NA4W) 46500cc
MFC-1912	MASUMA	MAZDA	47.0 (NA4W) 47000cc	1984-1994	MAZDA 47.0 (NA4W) 47000cc
MFC-1912	MASUMA	MAZDA	47.5 (NA4W) 47500cc	1984-1994	MAZDA 47.5 (NA4W) 47500cc
MFC-1912	MASUMA	MAZDA	48.0 (NA4W) 48000cc	1984-1994	MAZDA 48.0 (NA4W) 48000cc
MFC-1912	MASUMA	MAZDA	48.5 (NA4W) 48500cc	1984-1994	MAZDA 48.5 (NA4W) 48500cc
MFC-1912	MASUMA	MAZDA	49.0 (NA4W) 49000cc	1984-1994	MAZDA 49.0 (NA4W) 49000cc
MFC-1912	MASUMA	MAZDA	49.5 (NA4W) 49500cc	1984-1994	MAZDA 49.5 (NA4W) 49500cc
MFC-1912	MASUMA	MAZDA	50.0 (NA4W) 50000cc	1984-1994	MAZDA 50.0 (NA4W) 50000cc
MFC-1912	MASUMA	MAZDA	50.5 (NA4W) 50500cc	1984-1994	MAZDA 50.5 (NA4W) 50500cc
MFC-1912	MASUMA	MAZDA	51.0 (NA4W) 51000cc	1984-1994	MAZDA 51.0 (NA4W) 51000cc
MFC-1912	MASUMA	MAZDA	51.5 (NA4W) 51500cc	1984-1994	MAZDA 51.5 (NA4W) 51500cc
MFC-1912	MASUMA	MAZDA	52.0 (NA4W) 52000cc	1984-1994	MAZDA 52.0 (NA4W) 52000cc
MFC-1912	MASUMA	MAZDA	52.5 (NA4W) 52500cc	1984-1994	MAZDA 52.5 (NA4W) 52500cc
MFC-1912	MASUMA	MAZDA	53.0 (NA4W) 53000cc	1984-1994	MAZDA 53.0 (NA4W) 53000cc
MFC-1912	MASUMA	MAZDA	53.5 (NA4W) 53500cc	1984-1994	MAZDA 53.5 (NA4W) 53500cc
MFC-1912	MASUMA	MAZDA	54.0 (NA4W) 54000cc	1984-1994	MAZDA 54.0 (NA4W) 54000cc
MFC-1912	MASUMA	MAZDA	54.5 (NA4W) 54500cc	1984-1994	MAZDA 54.5 (NA4W) 54500cc
MFC-1912	MASUMA	MAZDA	55.0 (NA4W) 55000cc	1984-1994	MAZDA 55.0 (NA4W) 55000cc
MFC-1912	MASUMA	MAZDA	55.5 (NA4W) 55500cc	1984-1994	MAZDA 55.5 (NA4W) 55500cc
MFC-1912	MASUMA	MAZDA	56.0 (NA4W) 56000cc	1984-1994	MAZDA 56.0 (NA4W) 56000cc
MFC-1912	MASUMA	MAZDA	56.5 (NA4W) 56500cc	1984-1994	MAZDA 56.5 (NA4W) 56500cc
MFC-1912	MASUMA	MAZDA	57.0 (NA4W) 57000cc	1984-1994	MAZDA 57.0 (NA4W) 57000cc
MFC-1912	MASUMA	MAZDA	57.5 (NA4W) 57500cc	1984-1994	MAZDA 57.5 (NA4W) 57500cc
MFC-1912	MASUMA	MAZDA	58.0 (NA4W) 58000cc	1984-1994	MAZDA 58.0 (NA4W) 58000cc
MFC-1912	MASUMA	MAZDA	58.5 (NA4W) 58500cc	1984-1994	MAZDA 58.5 (NA4W) 58500cc
MFC-1912	MASUMA	MAZDA	59.0 (NA4W) 59000cc	1984-1994	MAZDA 59.0 (NA4W) 59000cc
MFC-1912	MASUMA	MAZDA	59.5 (NA4W) 59500cc	1984-1994	MAZDA 59.5 (NA4W) 59500cc
MFC-1912	MASUMA	MAZDA	60.0 (NA4W) 60000cc	1984-1994	MAZDA 60.0 (NA4W) 60000cc
MFC-1912	MASUMA	MAZDA	60.5 (NA4W) 60500cc	1984-1994	MAZDA 60.5 (NA4W) 60500cc
MFC-1912	MASUMA	MAZDA	61.0 (NA4W) 61000cc	1984-1994	MAZDA 61.0 (NA4W) 61000cc
MFC-1912	MASUMA	MAZDA	61.5 (NA4W) 61500cc	1984-1994	MAZDA 61.5 (NA4W) 61500cc
MFC-1912	MASUMA	MAZDA	62.0 (NA4W) 62000cc	1984-1994	MAZDA 62.0 (NA4W) 62000cc
MFC-1912	MASUMA	MAZDA	62.5 (NA4W) 62500cc	1984-1994	MAZDA 62.5 (NA4W) 62500cc
MFC-1912	MASUMA	MAZDA	63.0 (NA4W) 63000cc	1984-1994	MAZDA 63.0 (NA4W) 63000cc
MFC-1912	MASUMA	MAZDA	63.5 (NA4W) 63500cc	1984-1994	MAZDA 63.5 (NA4W) 63500cc
MFC-1912	MASUMA	MAZDA	64.0 (NA4W) 64000cc	1984-1994	MAZDA 64.0 (NA4W) 64000cc
MFC-1912	MASUMA	MAZDA	64.5 (NA4W) 64500cc	1984-1994	MAZDA 64.5 (NA4W) 64500cc
MFC-1912	MASUMA	MAZDA	65.0 (NA4W) 65000cc	1984-1994	MAZDA 65.0 (NA4W) 65000cc
MFC-1912	MASUMA	MAZDA	65.5 (NA4W) 65500cc	1984-1994	MAZDA 65.5 (NA4W) 65500cc
MFC-1912	MASUMA	MAZDA	66.0 (NA4W) 66000cc	1984-1994	MAZDA 66.0 (NA4W) 66000cc
MFC-1912	MASUMA	MAZDA	66.5 (NA4W) 66500cc	1984-1994	MAZDA 66.5 (NA4W) 66500cc
MFC-1912	MASUMA	MAZDA	67.0 (NA4W) 67000cc	1984-1994	MAZDA 67.0 (NA4W) 67000cc
MFC-1912	MASUMA	MAZDA	67.5 (NA4W) 67500cc	1984-1994	MAZDA 67.5 (NA4W) 67500cc
MFC-1912	MASUMA	MAZDA	68.0 (NA4W) 68000cc	1984-1994	MAZDA 68.0 (NA4W) 68000cc
MFC-1912	MASUMA	MAZDA	68.5 (NA4W) 68500cc	1984-1994	MAZDA 68.5 (NA4W) 68500cc
MFC-1912	MASUMA	MAZDA	69.0 (NA4W) 69000cc	1984-1994	MAZDA 69.0 (NA4W) 69000cc
MFC-1912	MASUMA	MAZDA	69.5 (NA4W) 69500cc	1984-1994	MAZDA 69.5 (NA4W) 6

Product Description

Product Description

MASUMA No.	MFC-1912
Part Name	Oil filter
OEM No.	0324-14-300,0370-23-802,119305-35151,15208,15208-6A0A0,15208AA080,15208AA100,15208-HA000,15208-HC010,B6Y1-14-302
Maintenance	1 month warranty
In stock	In stock

Masuma Oil Filters are manufactured to exacting OEM filter factory specifications. The filter element is a folded paper block with a high packing density. The design of the filter includes two important valves: anti-drain (reverse), which protects the motor from oil starvation at start-up, and bypass (bypass), which provides oil directly if it is impossible to pump it through the filter. Masuma oil filters provide complete oil cleaning from solid particles, sludge and wear products that are dangerous for rubbing engine parts. Masuma is a global brand of auto parts, components and consumables. The main specialization of the brand: resource parts for post-warranty service of Japanese cars. The company's strategy is to offer consumers the best ratio of reliability and cost of spare parts. All products are manufactured to order, technology and under the control of the parent company Masuma Auto Spare Parts Co., LTD (Tokyo, Japan) at dozens of modern factories located in East Asia.

SUITABLE FOR CAR MODELS DETAILS

MASUMA	Brand	Car model	Chassis number	Year	Configuration
MFC-1912	HYUNDAI	i30 III	1.4L KAPPA MPI. HATCH 5D	2016-	KAPPA. 1.4L KAPPA MPI. HATCH 5D
MFC-1912	HYUNDAI	i30 III	1.4L KAPPA MPI. WAGON	2016-	KAPPA. 1.4L KAPPA MPI. WAGON
MFC-1912	HYUNDAI	i30 II	1.4L KAPPA. HATCH 3D	2014-2016	KAPPA. 1.4L KAPPA. HATCH 3D
MFC-1912	HYUNDAI	i30 II	1.4L KAPPA. HATCH 3D	2016-2017	KAPPA. 1.4L KAPPA. HATCH 3D
MFC-1912	HYUNDAI	i30 II	1.4L KAPPA. HATCH 5D	2014-2016	KAPPA. 1.4L KAPPA. HATCH 5D
MFC-1912	HYUNDAI	i30 II	1.4L KAPPA. HATCH 5D	2016-2017	KAPPA. 1.4L KAPPA. HATCH 5D
MFC-1912	HYUNDAI	i30 II	1.4L KAPPA. WAGON	2014-2016	KAPPA. 1.4L KAPPA. WAGON
MFC-1912	HYUNDAI	i30 II	1.4L KAPPA. WAGON	2016-2017	KAPPA. 1.4L KAPPA. WAGON
MFC-1912	ISUZU	ASKA CX	BCL	1991-1993	BCL. E.J20. 2WD
MFC-1912	KIA	SPECTRA I	1.6L S6D. LIFTBACK 5D	2000-2004	S6D. 1.6L S6D. LIFTBACK 5D
MFC-1912	KIA	RIO I	1.3L A3E. HATCH 5D	2000-2005	A3E. 1.3L A3E. HATCH 5D
MFC-1912	KIA	RIO I	1.5L A5E. HATCH 5D	2000-2005	A5E. 1.5L A5E. HATCH 5D
MFC-1912	KIA	RIO I	1.3L A3E. SEDAN	2000-2005	A3E. 1.3L A3E. SEDAN
MFC-1912	KIA	RIO I	1.5L A5E. SEDAN	2000-2005	A5E. 1.5L A5E. SEDAN
MFC-1912	MAZDA	MAZDA 6	GL# 2500cc. TURBO SKYACTIV-G. SEDAN	2018-2019	SKYACTIV-G. GL# 2500cc. TURBO SKYACTIV-G. SEDAN
MFC-1912	MAZDA	MAZDA 6	GL# 2500cc. TURBO SKYACTIV-G. SEDAN	2019-2020	SKYACTIV-G. GL# 2500cc. TURBO SKYACTIV-G. SEDAN
MFC-1912	MAZDA	MAZDA 6	GL# 2500cc. TURBO SKYACTIV-G. SEDAN	2020-	SKYACTIV-G. GL# 2500cc. TURBO SKYACTIV-G. SEDAN
MFC-1912	MAZDA	MAZDA 3	BM# 1500cc. SKYACTIV-G. HATCH. RUS	2013-2013	SKYACTIV-G. BM# 1500cc. SKYACTIV-G. HATCH. RUS
MFC-1912	MAZDA	MAZDA 3	BM# 1500cc. SKYACTIV-G. SEDAN. RUS	2013-2016	SKYACTIV-G. BM# 1500cc. SKYACTIV-G. SEDAN. RUS
MFC-1912	MAZDA	MAZDA 3	BM# 2000cc. SKYACTIV-G. HATCH. RUS	2013-2016	SKYACTIV-G. BM# 2000cc. SKYACTIV-G. HATCH. RUS
MFC-1912	MAZDA	MAZDA 3	BM# 2000cc. SKYACTIV-G. SEDAN. RUS	2013-2016	SKYACTIV-G. BM# 2000cc. SKYACTIV-G. SEDAN. RUS
MFC-1912	MAZDA	MAZDA 3	BM# 1500cc. SKYACTIV-G. HATCH. RUS	2016-	SKYACTIV-G. BM# 1500cc. SKYACTIV-G. HATCH. RUS

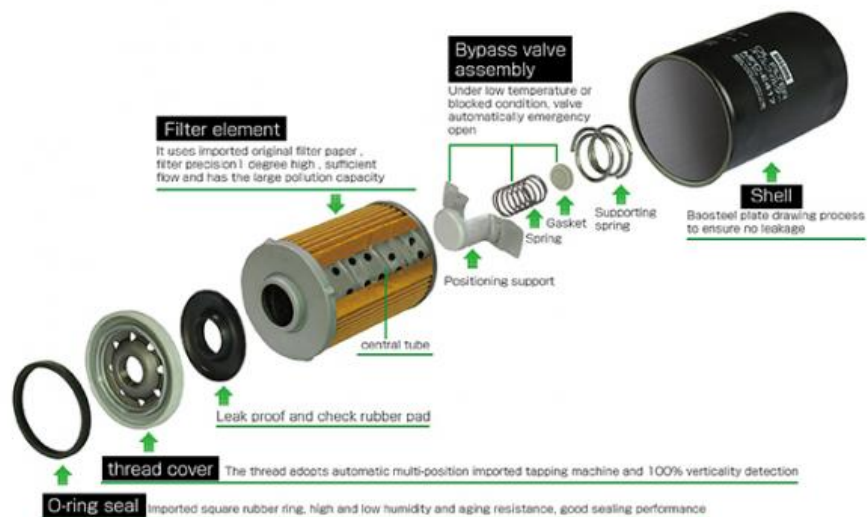
**Contact Supplier send an enquiry to
confirm suitable car**

MFC-1912

MASUMA



MASUMA LUBE SPIN-ON FILTER (SCHEMATIC DIAGRAM)



MASUMA

AUTO SPARE PARTS

— FILTER —



PREMIUM AUTO PARTS SOURCE FACTORY

100000+
OE Numbers

22 Years
Experience

MASUMA has 103 kinds of auto parts products, spark plugs, brake pads, and fuel pumps, etc., and we have products suitable for various car models.

The dangers of not changing the filter in time!!

Engine work requires the lubrication of oil. If the impurities in the oil are not filtered into the cylinder, the aging of the piston group and the cylinder will be accelerated.



Cylinder fray



Petrol blocked



Burn oil cylinder



Reduced engine power



Increased fuel consumption



Make noise

DO YOU NEED SUCH A FILTER ?

/ HANDLE ALL CHALLENGES WITH EASE /



Not easy to
deposit carbon



Slow wear



Protect the
cylinder



Reduce fuel
consumption

The function of the oil filter is to filter impurities, so it should be replaced at the same time as the oil. If it is not replaced in time, the oil will not be effectively filtered, which will lead to accelerated wear of the internal parts of the engine due to impurities in the oil.

WORKING PRINCIPLE :

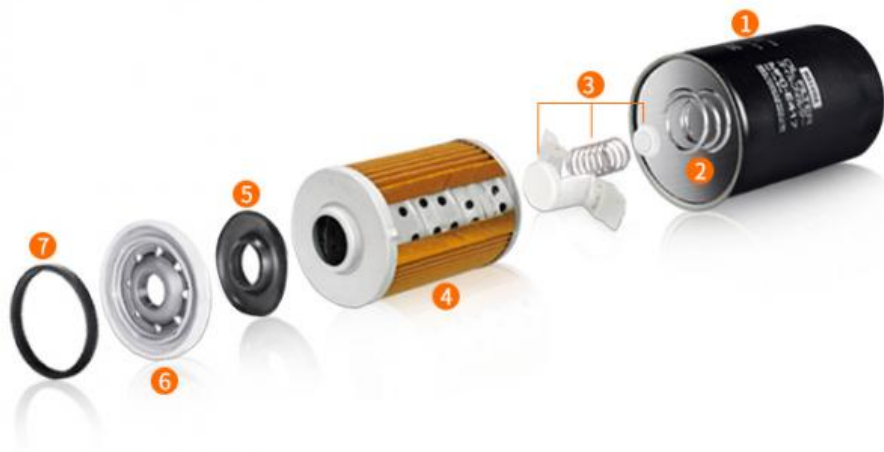
Filter impurities, dirt, etc. in the oil, provide reliable lubricating oil for the engine, reduce wear, reduce wear and prolong engine life.



Oil filter

Product Structure :

- The shell uses 0.5MM electrolytic plate, which is durable and not easy to be damaged.
- Bypass valve and check valve design to ensure continuous supply of oil.
- Adhesive-filled double lock seam can withstand pressures up to 300 p.s.i
- Multi-directional sealing ring ensures that the oil seal does not leak and can be quickly disassembled.



- | | | | |
|----------|-------------------------------|------------------|----------|
| 1 Shell | 3 Bypass valve | 5 Rubber gasket | 7 Gasket |
| 2 Spring | 4 Filter paper+Metal Intranet | 6 Threaded cover | |

Use high-quality cellulose filter paper.

Long-term guarantee of oil clean



Bypass valve device design, keep the maintain oil supply stability.

Bypass valve :

It is ensured that the oil in many cases is supplied to the bypass valve in the following cases, so as to ensure that a sufficient amount of oil reaches the surface of the engine parts to reduce friction.

- Oil is viscous in cold start or low temperature conditions.
- Exceeds the replacement cycle and the filter element is severely blocked.

Check valve :

Prevents lubrication when the engine is shut down again the oil in the system is emptied to ensure that when the engine starts quickly supply oil when moving.



MASUMA FILTER SERIES

/ PROVIDE CLEANING SOLUTIONS /

Air filter

Cabin filter

Oil filter

Fuel filter



MASUMA

Note:

MASUMA auto parts covered more than 900,000 different OEM numbers, [here only show few parts.](#)
Pls Contact us to check more and details information for you.

Search For Car Brand Click)	Auto parts	Product List	Number of suitable car models	
For Japanes Car: For Toyota For Honda For Nissan For Mazda For Lexus For Infiniti For Mitsubishi For Suzuki For Subaru For DAIHATSU For ISUZU For Fuso	Auto Engine Systems	Air Filters	1215	
		Fuel Filters	255	
		Oil Filters	588	
		Spark Plugs	59	
		Engine Mounts	888	
		Ignition Coils	255	
		Ignition Cable	77	
		Timing Chain Kit	67	
		Cylinder Head Gaskets	223	
		Ball Joints	655	
		Control Arms	394	
		For Korean Car:		

For HYUNDAI		Rubber Bushing	685
For KIA		Shock Absorber Springs	153
	Auto Suspension Systems	Shock Absorbers	323
For Europe Car:		Stabilizer Links	453
For Benz		Suspension Strut Bearings	110
For BMW		Brake Pads	1966
For Audi		Brake Discs	825
For VW		Brake shoes	220
For Porsche		Brake Cables	216
For Skoda	Auto Brake Systems	Brake Hoses	707
For Renault		Tie Rod Ends	345
For Peugeot		Tie Rods (Rack End)	247
For Volvo		Steering Gear Boots	435
For Alfa Romeo		Steering Gears	60
For America Car:	Auto Steering Systems	Cabin Filters	736
For Ford		C.V. Joints	199
For OPEL	Air Conditioning Systems	C.V. Joint Boots	157
For Chevrolet		Tensioner & Belts	1043
	Auto Transmission Systems	Wheel Hubs	103
Other brand:		Antifreeze	4
For Land Rover		Brake Lubricants	2
For Jeep		Engine Lubricants	42
For Ssangyong	Fluid & Chemicals	Transmission Fluids	15
		Other Auto Parts	5074
		Tire Repair Tools	57
		Auto Fastener & Clip	1881
	Other Auto Parts	Lug Nuts & Accessories	233
		Other Vehicle Tools	15



MAIN CAR SERIES

Cover 90% Of JAPANESE And KOREA Cars



Corolla



Crown



Camry



Civic



Tiida



Accord



RX300



RAV4



Golf



Passo



HR-V



Fortuner



Yaris



Avanza



Land Cruiser



Pajero(Montero)



Mirage



Stream



Hilux



CR-V



Legacy



Fit (jazz)



HiAce



X-Trail



Primera



Cedric



Mazda 3



Mazda 6



Prius



City



Impreza



Focus



Company Profile



[View more history >>](#)

MASUMA was founded in 1998 Japan, integrates R&D, production, sales and operation as one. It has its

own wholly-owned subsidiary factory and joint venture production base in **GuangZhou China**, have an area of **30,000 sqm**, **500+ employees** in the company, the annual turnover to reach 55 million USD. Masuma specializes in the design, development, manufacturing, sales and service of Japanese, German, American, Chinese and Korean auto parts. The current products include lubricating oil, transmission fluid, brake oil, brake pad, brake disc, filter, spark plug, ignition coil, ball joint, swing arm, shock absorber, belt, wiper, water tank cover and other series, over ten thousands of varieties, and products are sold to more than 100 countries and regions in the world.

MASUMA 1998
2011 30,000 500 1 55
Masuma 100



Manufacturing Technique



PRECISION

Automated machinery

100,000 pieces/day



TAKAMAZ-FEELER



BROTHER SPEEDIO



TOYO



Mitutoyo QC



NGATA



KAWATA

Exhibition

EXHIBITION



MASUMA Masuma (Guangzhou) International Trading Co., Ltd.

+8615323309608

msm@masuma.com

masumajp.com

No. 19, Liwu Road, Tanbu Town, Huadu District, Guangzhou