

ME228898 ME088532 Spin-on Oil Filter Paper for FUSO MITSUBISHI TRUCKS CANTER Assurance

Our Product Introduction

for more products please visit us on masumajp.com

Basic Information

- Place of Origin: Guangdong, China
- Brand Name: MASUMA
- Model Number: MFC-1326
- Minimum Order Quantity: 4 pieces
- Price: Negotiation

MASUMA
 AUTO SPARE PARTS


Product Specification

- Condition: New
- Model: Canter (FB7, FB8, FE7, FE8) 7.Generation, Canter (FE5, FE6) 6.Generation
- Year: 2001-2010, 1986-, 1994-2021
- Engine: Canter 60, Canter 75, Canter 35, Canter 55, 6c18, 3C11, 3C13, 3C15
- OE NO.: ME228898, ME088532
- Car Fitment: MITSUBISHI
- Reference NO.: FO579S, MH3391, 0986452607, C5816, PMFL224, ZP3048, 0986452608, YOMI011, C5808, FC7301, LF3817, SP984, P502304, F963S3475R1, FO579, ZP27E1, FO597, 0986AF1084, SP5195, J1315022
- Warranty: 6 Months
- Car Model: CELICA
- Size: 7*7*11.7 Cm
- MASUMA NO.: MFC-1326

MFC-1326
MASUMA


More Images

MASUMA

MASUMA


Product Description

Product Description

| | |
|--------------------|-------------------|
| MASUMA No. | MFC-1326 |
| Part Name | Oil filter |
| OEM No. | ME088532,ME228898 |
| Maintenance | 1 month warranty |
| In stock | In stock |

Masuma Oil Filters are manufactured to exacting OEM filter factory specifications. The filter element is a folded paper block with a high packing density. The design of the filter includes two important valves: anti-drain (reverse), which protects the motor from oil starvation at start-up, and bypass (bypass), which provides oil directly if it is impossible to pump it through the filter. Masuma oil filters provide complete oil cleaning from solid particles, sludge and wear products that are dangerous for rubbing engine parts. Masuma is a global brand of auto parts, components and consumables. The main specialization of the brand: resource parts for post-warranty service of Japanese cars. The company's strategy is to offer consumers the best ratio of reliability and cost of spare parts. All products are manufactured to order, technology and under the control of the parent company Masuma Auto Spare Parts Co., LTD (Tokyo, Japan) at dozens of modern factories located in East Asia.

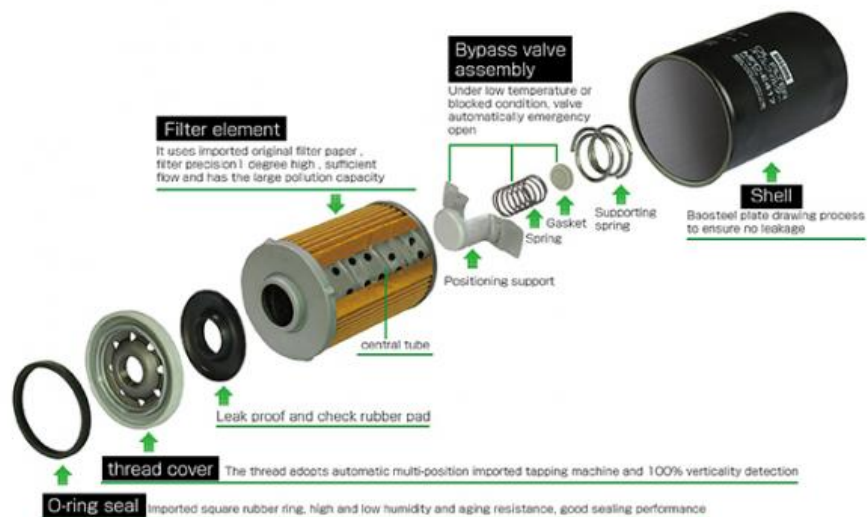


MFC-1326

MASUMA



MASUMA LUBE SPIN-ON FILTER (SCHEMATIC DIAGRAM)



MASUMA

AUTO SPARE PARTS

— FILTER —



PREMIUM AUTO PARTS SOURCE FACTORY

100000+
OE Numbers

22 Years
Experience

MASUMA has 103 kinds of auto parts products, spark plugs, brake pads, and fuel pumps, etc., and we have products suitable for various car models.

The dangers of not changing the filter in time!!

Engine work requires the lubrication of oil. If the impurities in the oil are not filtered into the cylinder, the aging of the piston group and the cylinder will be accelerated.



Cylinder fray



Petrol blocked



Burn oil cylinder



Reduced engine power



Increased fuel consumption



Make noise

DO YOU NEED SUCH A FILTER ?

/ HANDLE ALL CHALLENGES WITH EASE /



Not easy to
deposit carbon



Slow wear



Protect the
cylinder



Reduce fuel
consumption

The function of the oil filter is to filter impurities, so it should be replaced at the same time as the oil. If it is not replaced in time, the oil will not be effectively filtered, which will lead to accelerated wear of the internal parts of the engine due to impurities in the oil.

WORKING PRINCIPLE :

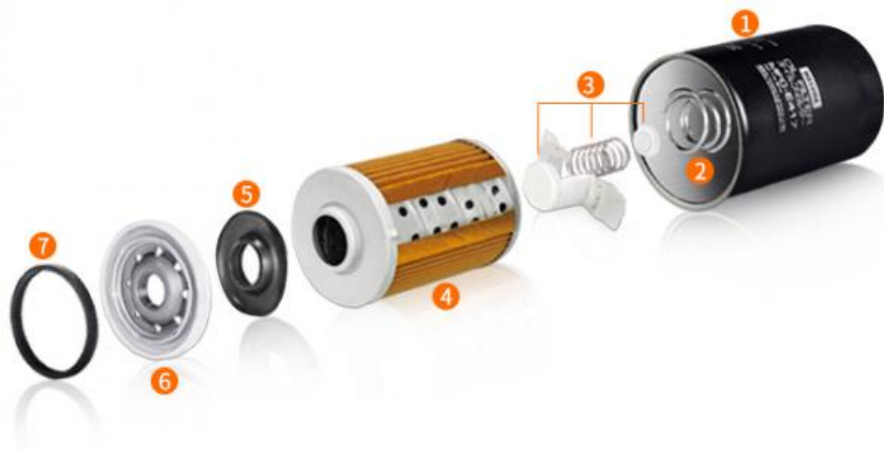
Filter impurities, dirt, etc. in the oil, provide reliable lubricating oil for the engine, reduce wear, reduce wear and prolong engine life.



Oil filter

Product Structure :

- The shell uses 0.5MM electrolytic plate, which is durable and not easy to be damaged.
- Bypass valve and check valve design to ensure continuous supply of oil.
- Adhesive-filled double lock seam can withstand pressures up to 300 p.s.i
- Multi-directional sealing ring ensures that the oil seal does not leak and can be quickly disassembled.



- | | | | |
|----------|-------------------------------|------------------|----------|
| 1 Shell | 3 Bypass valve | 5 Rubber gasket | 7 Gasket |
| 2 Spring | 4 Filter paper+Metal Intranet | 6 Threaded cover | |

Use high-quality cellulose filter paper.

Long-term guarantee of oil clean



Bypass valve device design, keep the maintain oil supply stability.

Bypass valve :

It is ensured that the oil in many cases is supplied to the bypass valve in the following cases, so as to ensure that a sufficient amount of oil reaches the surface of the engine parts to reduce friction.

- Oil is viscous in cold start or low temperature conditions.
- Exceeds the replacement cycle and the filter element is severely blocked.

Check valve :

Prevents lubrication when the engine is shut down again the oil in the system is emptied to ensure that when the engine starts quickly supply oil when moving.



MASUMA FILTER SERIES

/ PROVIDE CLEANING SOLUTIONS /

Air filter

Cabin filter

Oil filter

Fuel filter



MASUMA

Note:

MASUMA auto parts covered more than 900,000 different OEM numbers, [here only show few parts.](#)
Pls Contact us to check more and details information for you.

| Search For Car Brand (Click) | Auto parts | Product List | Number of suitable car models | |
|--|---------------------|-----------------------|-------------------------------|--|
| For Japanes Car: For Toyota For Honda For Nissan For Mazda For Lexus For Infiniti For Mitsubishi For Suzuki For Subaru For DAIHATSU For ISUZU For Fuso | Auto Engine Systems | Air Filters | 1215 | |
| | | Fuel Filters | 255 | |
| | | Oil Filters | 588 | |
| | | Spark Plugs | 59 | |
| | | Engine Mounts | 888 | |
| | | Ignition Coils | 255 | |
| | | Ignition Cable | 77 | |
| | | Timing Chain Kit | 67 | |
| | | Cylinder Head Gaskets | 223 | |
| | | Ball Joints | 655 | |
| | | Control Arms | 394 | |
| | | For Korean Car: | | |

| | | | |
|-------------------------|---------------------------|---------------------------|------|
| For HYUNDAI | | Rubber Bushing | 685 |
| For KIA | | Shock Absorber Springs | 153 |
| | Auto Suspension Systems | Shock Absorbers | 323 |
| For Europe Car: | | Stabilizer Links | 453 |
| For Benz | | Suspension Strut Bearings | 110 |
| For BMW | | Brake Pads | 1966 |
| For Audi | | Brake Discs | 825 |
| For VW | | Brake shoes | 220 |
| For Porsche | | Brake Cables | 216 |
| For Skoda | Auto Brake Systems | Brake Hoses | 707 |
| For Renault | | Tie Rod Ends | 345 |
| For Peugeot | | Tie Rods (Rack End) | 247 |
| For Volvo | | Steering Gear Boots | 435 |
| For Alfa Romeo | | Steering Gears | 60 |
| For America Car: | Auto Steering Systems | Cabin Filters | 736 |
| For Ford | | C.V. Joints | 199 |
| For OPEL | Air Conditioning Systems | C.V. Joint Boots | 157 |
| For Chevrolet | | Tensioner & Belts | 1043 |
| | Auto Transmission Systems | Wheel Hubs | 103 |
| Other brand: | | Antifreeze | 4 |
| For Land Rover | | Brake Lubricants | 2 |
| For Jeep | | Engine Lubricants | 42 |
| For Ssangyong | Fluid & Chemicals | Transmission Fluids | 15 |
| | | Other Auto Parts | 5074 |
| | | Tire Repair Tools | 57 |
| | | Auto Fastener & Clip | 1881 |
| | Other Auto Parts | Lug Nuts & Accessories | 233 |
| | | Other Vehicle Tools | 15 |



MAIN CAR SERIES

Cover 90% Of JAPANESE And KOREA Cars



Corolla



Crown



Camry



Civic



Tiida



Accord



RX300



RAV4



Golf



Passo



HR-V



Fortuner



Yaris



Avanza



Land Cruiser



Pajero(Montero)



Mirage



Stream



Hilux



CR-V



Legacy



Fit (jazz)



HiAce



X-Trail



Primera



Cedric



Mazda 3



Mazda 6



Prius



City



Impreza



Focus



Company Profile



[View more history >>](#)

MASUMA was founded in 1998 Japan, integrates R&D, production, sales and operation as one. It has its

own wholly-owned subsidiary factory and joint venture production base in **GuangZhou China**, have an area of **30,000 sqm**, **500+ employees** in the company, the annual turnover to reach 55 million USD. Masuma specializes in the design, development, manufacturing, sales and service of Japanese, German, American, Chinese and Korean auto parts. The current products include lubricating oil, transmission fluid, brake oil, brake pad, brake disc, filter, spark plug, ignition coil, ball joint, swing arm, shock absorber, belt, wiper, water tank cover and other series, over ten thousands of varieties, and products are sold to more than 100 countries and regions in the world.

MASUMA 1998
2011 30,000 500 1 55
Masuma 100



Manufacturing Technique



PRECISION

Automated machinery

100,000 pieces/day



TAKAMAZ-FEELER



BROTHER SPEEDIO



TOYO



Mitutoyo QC



NGATA



KAWATA

Exhibition

EXHIBITION



MASUMA Masuma (Guangzhou) International Trading Co., Ltd.

+8615323309608

msm@masuma.com

masumajp.com

No. 19, Liwu Road, Tanbu Town, Huadu District, Guangzhou