

0410758 1984-1990 MASUMA Auto Engine System Parts Oil Filter for MAZDA BONGO BRAUNY

Our Product Introduction

for more products please visit us on masumajp.com

Basic Information

- Place of Origin: Guangdong, China
- Brand Name: Masuma Brand
- Minimum Order Quantity: 2 pieces
- Price: Negotiation
- Packaging Details: carton

MASUMA
 AUTO SPARE PARTS


Product Specification

- Model: MR 2 I (AW1_), RAV 4 III (_A3_), CELICA Coupe (_T23_)
- Engine: 1.8 16V TS (ZZT231_), 2.4 (ACA33), 2.4 4WD (ACR38), 1.6 16V (AW11)
- Year: 1999-2006, 2005-, 1984-1990, 1988-2021
- OE NO.: 90915-10002
- Car Fitment: Toyota
- Reference NO.: 0410758, 0418065, PH2841, Z1042
- Warranty: 18 Months, 1 Month Warranty
- Car Model: CELICA
- Size: 7.1*7.1*8.9 Cm, 7.1*7.1*8.9cm
- Product Name: Oil Filter
- MASUMA NO.: MFC-1426
- Delivery Time: 3 Days
- In Stock: Yes
- Product Group Name: Oil Filter



More Images



Product Description

Product Description

MASUMA No. MFC-1426

Part Name Oil filter

OEM No. 0FE3R-14302,1230A152,1230A184,15208AA160,15208-HA001,15208-HC400,15208-HC401,26300-02751,30866266,45,MD135737

Maintenance 1 month warranty

In stock In stock

Masuma Oil Filters are manufactured to exacting OEM filter factory specifications. The filter element is a folded paper block with a high packing density. The design of the filter includes two important valves: anti-drain (reverse), which protects the motor from oil starvation at start-up, and bypass (bypass), which provides oil directly if it is impossible to pump it through the filter. Masuma oil filters provide complete oil cleaning from solid particles, sludge and wear products that are dangerous for rubbing engine parts. Masuma is a global brand of auto parts, components and consumables. The main specialization of the brand: resource parts for post-warranty service of Japanese cars. The company's strategy is to offer consumers the best ratio of reliability and cost of spare parts. All products are manufactured to order, technology and under the control of the parent company Masuma Auto Spare Parts Co., LTD (Tokyo, Japan) at dozens of modern factories located in East Asia.

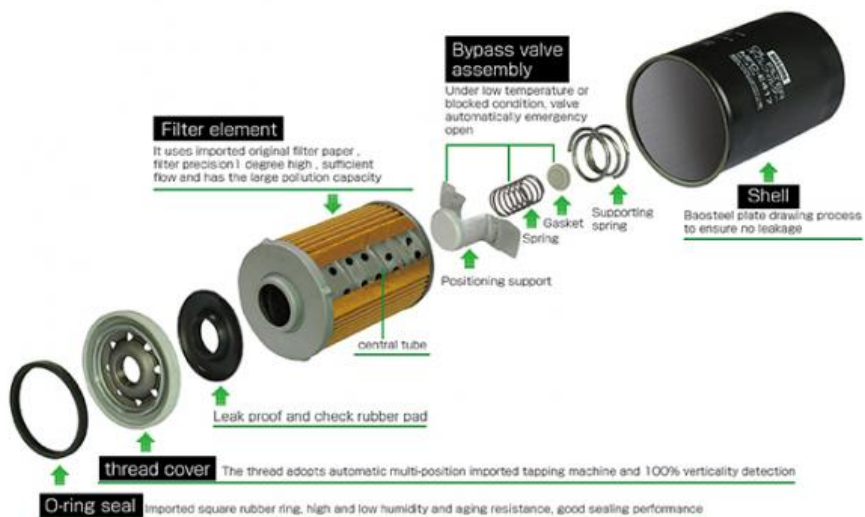
SUITABLE FOR CAR MODELS DETAILS

MASUMA	Brand	Car model	Chassis number	Year	Configuration
MFC-1426	FUSO (/MITSUBISHI)	CANTER	FA500	1997-1999	FA500. 4G63. 2WD.
MFC-1426	FUSO (/MITSUBISHI)	CANTER	FA510	1997-1999	FA510. 4G63. 2WD.
MFC-1426	FUSO (/MITSUBISHI)	CANTER	FA580	1997-1999	FA580. 4G63. 2WD.
MFC-1426	FUSO (/MITSUBISHI)	CANTER	FA590	1997-1999	FA590. 4G63. 2WD.
MFC-1426	FUSO (/MITSUBISHI)	CANTER	FB510	1999-2002	FB510. 4G63. 2WD.
MFC-1426	FUSO (/MITSUBISHI)	CANTER	FC563	1996-1999	FC563. 4G64. 2WD.
MFC-1426	ISUZU	GEMINI	JT151F	1990-1993	JT151F. 4XC1. 2WD
MFC-1426	ISUZU	GEMINI	JT151F	1991-1993	JT151F. 4XC1. 2WD
MFC-1426	ISUZU	PANERO	JT151F	1991-1993	JT151F. 4XC1. 2WD
MFC-1426	KIA	SPORTAGE I	2.0L FE. SUV 2D	1998-1998	FE-DOHC. 2.0L FE. SUV 2D
MFC-1426	KIA	SPORTAGE I	2.0L FE. SUV 3D	1998-1998	FE-DOHC. 2.0L FE. SUV 3D
MFC-1426	KIA	SPORTAGE I	2.0L FE. SUV 5D	1998-1998	FE-DOHC. 2.0L FE. SUV 5D
MFC-1426	MAZDA	BT-50	UNY0#4. 2600cc. G6-E. 2D. S. Arabia. 4WD	2008-2011	G6-E. UNY0#4. 2600cc. G6-E. 2D. S. Arabia. 4WD
MFC-1426	MAZDA	BT-50	UNY0#4. 2600cc. G6-E. 4D. S. Arabia. 4WD	2008-2011	G6-E. UNY0#4. 2600cc. G6-E. 4D. S. Arabia. 4WD
MFC-1426	MAZDA	BT-50	UNY0#4. 2600cc. G6-E. 2D. General. 4WD	2008-2011	G6-E. UNY0#4. 2600cc. G6-E. 2D. General. 4WD
MFC-1426	MAZDA	BT-50	UNY0#4. 2600cc. G6-E. 4D. General. 4WD	2008-2011	G6-E. UNY0#4. 2600cc. G6-E. 4D. General. 4WD
MFC-1426	MAZDA	BT-50	UN# 2600cc. G6-E. 2D. S. Arabia. 4WD	2006-2008	G6-E. UN# 2600cc. G6-E. 2D. S. Arabia. 4WD
MFC-1426	MAZDA	BT-50	UN# 2600cc. G6-E. 4D. S. Arabia. 4WD	2006-2008	G6-E. UN# 2600cc. G6-E. 4D. S. Arabia. 4WD
MFC-1426	MAZDA	BT-50	UNY0# 2600cc. G6-E. 2D. General. 4WD	2006-2008	G6-E. UNY0# 2600cc. G6-E. 2D. General. 4WD
MFC-1426	MAZDA	BT-50	UNY0# 2600cc. G6-E. 4D. General. 4WD	2006-2008	G6-E. UNY0# 2600cc. G6-E. 4D. General. 4WD
MFC-1426	MAZDA	BT-50	UNY0#4. 2600cc. G6-E. 2D. S. Arabia.	2008-2011	G6-E. UNY0#4. 2600cc. G6-E. 2D. S. Arabia.
MFC-1426	MAZDA	BT-50	UNY0#4. 2600cc. G6-E.	2008-2011	G6-E. UNY0#4. 2600cc. G6-E. 4D. S. Arabia.

**Contact Supplier send an enquiry to
confirm suitable car**



MASUMA LUBE SPIN-ON FILTER (SCHEMATIC DIAGRAM)



MASUMA

AUTO SPARE PARTS

— FILTER —



PREMIUM AUTO PARTS SOURCE FACTORY

100000+
OE Numbers

22 Years
Experience

MASUMA has 103 kinds of auto parts products, spark plugs, brake pads, and fuel pumps, etc., and we have products suitable for various car models.

The dangers of not changing the filter in time!!

Engine work requires the lubrication of oil. If the impurities in the oil are not filtered into the cylinder, the aging of the piston group and the cylinder will be accelerated.



Cylinder fray



Petrol blocked



Burn oil cylinder



Reduced engine power



Increased fuel consumption



Make noise

DO YOU NEED SUCH A FILTER ?

/ HANDLE ALL CHALLENGES WITH EASE /



Not easy to
deposit carbon



Slow wear



Protect the
cylinder



Reduce fuel
consumption

The function of the oil filter is to filter impurities, so it should be replaced at the same time as the oil. If it is not replaced in time, the oil will not be effectively filtered, which will lead to accelerated wear of the internal parts of the engine due to impurities in the oil.

WORKING PRINCIPLE :

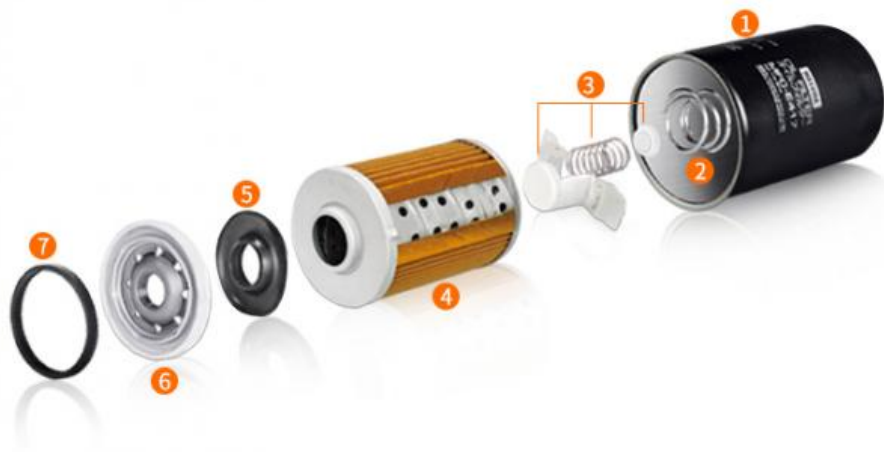
Filter impurities, dirt, etc. in the oil, provide reliable lubricating oil for the engine, reduce wear, reduce wear and prolong engine life.



Oil filter

Product Structure :

- The shell uses 0.5MM electrolytic plate, which is durable and not easy to be damaged.
- Bypass valve and check valve design to ensure continuous supply of oil.
- Adhesive-filled double lock seam can withstand pressures up to 300 p.s.i
- Multi-directional sealing ring ensures that the oil seal does not leak and can be quickly disassembled.



- | | | | |
|----------|-------------------------------|------------------|----------|
| ① Shell | ③ Bypass valve | ⑤ Rubber gasket | ⑦ Gasket |
| ② Spring | ④ Filter paper+Metal Intranet | ⑥ Threaded cover | |

Use high-quality cellulose filter paper.

Long-term guarantee of oil clean



Bypass valve device design, keep the maintain oil supply stability.

Bypass valve :

It is ensured that the oil in many cases is supplied to the bypass valve in the following cases, so as to ensure that a sufficient amount of oil reaches the surface of the engine parts to reduce friction.

- Oil is viscous in cold start or low temperature conditions.
- Exceeds the replacement cycle and the filter element is severely blocked.

Check valve :

Prevents lubrication when the engine is shut down again the oil in the system is emptied to ensure that when the engine starts quickly supply oil when moving.



MASUMA FILTER SERIES

/ PROVIDE CLEANING SOLUTIONS /

Air filter

Cabin filter

Oil filter

Fuel filter



MASUMA

Note:

MASUMA auto parts covered more than 900,000 different OEM numbers, [here only show few parts.](#)
Pls Contact us to check more and details information for you.

Search For Car Brand (Click)	Auto parts	Product List	Number of suitable car models
For Japanes Car: For Toyota For Honda For Nissan For Mazda For Lexus For Infiniti For Mitsubishi For Suzuki For Subaru For DAIHATSU For ISUZU For Fuso	Auto Engine Systems	Air Filters	1215
		Fuel Filters	255
		Oil Filters	588
		Spark Plugs	59
		Engine Mounts	888
		Ignition Coils	255
		Ignition Cable	77
		Timing Chain Kit	67
		Cylinder Head Gaskets	223
		Ball Joints	655
		Control Arms	394
For Korean Car:			

For HYUNDAI		Rubber Bushing	685
For KIA		Shock Absorber Springs	153
	Auto Suspension Systems	Shock Absorbers	323
For Europe Car:		Stabilizer Links	453
For Benz		Suspension Strut Bearings	110
For BMW		Brake Pads	1966
For Audi		Brake Discs	825
For VW		Brake shoes	220
For Porsche		Brake Cables	216
For Skoda	Auto Brake Systems	Brake Hoses	707
For Renault		Tie Rod Ends	345
For Peugeot		Tie Rods (Rack End)	247
For Volvo		Steering Gear Boots	435
For Alfa Romeo		Steering Gears	60
For America Car:	Auto Steering Systems	Cabin Filters	736
For Ford		C.V. Joints	199
For OPEL	Air Conditioning Systems	C.V. Joint Boots	157
For Chevrolet		Tensioner & Belts	1043
	Auto Transmission Systems	Wheel Hubs	103
Other brand:		Antifreeze	4
For Land Rover		Brake Lubricants	2
For Jeep		Engine Lubricants	42
For Ssangyong	Fluid & Chemicals	Transmission Fluids	15
		Other Auto Parts	5074
		Tire Repair Tools	57
		Auto Fastener & Clip	1881
	Other Auto Parts	Lug Nuts & Accessories	233
		Other Vehicle Tools	15



MAIN CAR SERIES

Cover 90% Of JAPANESE And KOREA Cars



Corolla



Crown



Camry



Civic



Tiida



Accord



RX300



RAV4



Golf



Passo



HR-V



Fortuner



Yaris



Avanza



Land Cruiser



Pajero(Montero)



Mirage



Stream



Hilux



CR-V



Legacy



Fit (jazz)



HiAce



X-Trail



Primera



Cedric



Mazda 3



Mazda 6



Prius



City



Impreza



Focus



Company Profile



[View more history >>](#)

MASUMA was founded in 1998 Japan, integrates R&D, production, sales and operation as one. It has its

own wholly-owned subsidiary factory and joint venture production base in **GuangZhou China**, have an area of **30,000 sqm**, **500+ employees** in the company, the annual turnover to reach 55 million USD. Masuma specializes in the design, development, manufacturing, sales and service of Japanese, German, American, Chinese and Korean auto parts. The current products include lubricating oil, transmission fluid, brake oil, brake pad, brake disc, filter, spark plug, ignition coil, ball joint, swing arm, shock absorber, belt, wiper, water tank cover and other series, over ten thousands of varieties, and products are sold to more than 100 countries and regions in the world.

MASUMA 1998
2011 30,000 500 1 55
Masuma 100



Manufacturing Technique



PRECISION

Automated machinery

100,000 pieces/day



TAKAMAZ-FEELER



BROTHER SPEEDIO



TOYO



Mitutoyo QC



NGATA



KAWATA

Exhibition

EXHIBITION



MASUMA Masuma (Guangzhou) International Trading Co., Ltd.

+8615323309608

msm@masuma.com

masumajp.com

No. 19, Liwu Road, Tanbu Town, Huadu District, Guangzhou