

Our Product Introduction

MASUMA
AUTO SPARE PARTS



- Model: 4 RUNNER (_N18_), FJ CRUISER (GSJ1_), PRADO (_J1_), CELICA Coupe (_T18_), CAMRY Liftback (_V1_), CAMRY Saloon (_V1_), SUPRA (_A7_), HILUX V Pickup (_N_, KZN1_, VZN1_), SUPRA (_A8_)
- Engine: 3.4 4WD, 1.8 Turbo-D (CV10_), 2.4 I 4WD, 3.0 24V (MA70_), 3.0 Turbo (MA70_), 2.0 Turbo 4WD (ST185), 1.8 Turbo-D (CV10_), 3.0 (JZA80_), 3.0 I Bi-Turbo (JZA80_), 4.7 (UZJ100_), 4.0 (GSJ10_)
- Year: 1989-1994, 1983-1988, 1988-1999, 1983-1988, 1995-2002, 2006-, 1998-2007, 1993-2002, 1986-1993, 1989-2016
- OE NO.: 90915-20004-79, 90915-03005, 90915-20002, 90915-20004
- Car Fitment: Toyota
- Reference NO.: W 932/80, VFL 370, Z87A, VFL 372, J FO-211, J FO-299, J FO-279, J FO-218S, J FO-211S, J FO-299S, OF-3614, 807 894, ZP 507 D, P 2044, R-298, V70-0116, GFE 334

[illegible]

MASUMA™

[illegible]

Contact Supplier send an enquiry to confirm suitable car



for more products please visit us on masumajp.com

Product Description

Product Description

MASUMA No.	MFC-1125
Part Name	Oil filter
OEM No.	90915-03005,90915-20002,90915-20004,90915-20004-79
Maintenance	1 month warranty
In stock	Contact for inventory

Masuma Oil Filters are manufactured to exacting OEM filter factory specifications. The filter element is a folded paper block with a high packing density. The design of the filter includes two important valves: anti-drain (reverse), which protects the motor from oil starvation at start-up, and bypass (bypass), which provides oil directly if it is impossible to pump it through the filter. Masuma oil filters provide complete oil cleaning from solid particles, sludge and wear products that are dangerous for rubbing engine parts. Masuma is a global brand of auto parts, components and consumables. The main specialization of the brand: resource parts for post-warranty service of Japanese cars. The company's strategy is to offer consumers the best ratio of reliability and cost of spare parts. All products are manufactured to order, technology and under the control of the parent company Masuma Auto Spare Parts Co., LTD (Tokyo, Japan) at dozens of modern factories located in East Asia.

SUITABLE FOR CAR MODELS DETAILS

MASUMA	Brand	Car model	Chassis number	Year	Configuration
MFC-1125	LEXUS	GX470	UZJ120L	2002-2009	UZJ120L 4700. 2UZFE. DOHC. EFI. SUV Offroad. 4WD. Door 5
MFC-1125	LEXUS	LX470	UZJ100L	2002-2007	UZJ100L 4700. 2UZFE. DOHC. EFI. SUV Offroad. 4WD. Door 5
MFC-1125	LEXUS	LX450	FZJ80L	1996-1998	FZJ80L 4500. 1FZFE. DOHC. EFI. SUV Offroad. 4WD. Door 5
MFC-1125	LEXUS	GS430	UZS161L	2000-2005	UZS161L 4300. 3UZFE. DOHC. EFI. SEDAN. 2WD. Door 4
MFC-1125	LEXUS	GS430	UZS190L	2005-2008	UZS190L 4300. 3UZFE. DOHC. EFI. SEDAN. 2WD. Door 4
MFC-1125	LEXUS	GS430	UZS190L	2005-2007	UZS190L 4300. 3UZFE. DOHC. EFI. SEDAN. 2WD. Door 4
MFC-1125	LEXUS	LS400	UCF10L	1989-1992	UCF10L 4000. 1UZFE. DOHC. EFI. SEDAN. 2WD. Door 4
MFC-1125	LEXUS	LS400	UCF10L	1992-1994	UCF10L 4000. 1UZFE. DOHC. EFI. SEDAN. 2WD. Door 4
MFC-1125	LEXUS	LS400	UCF20L	1994-1999	UCF20L 4000. 1UZFE. DOHC. EFI. SEDAN. 2WD. Door 4
MFC-1125	LEXUS	LS400	UCF20L	1999-2000	UCF20L 4000. 1UZFE. DOHC. EFI. SEDAN. 2WD. Door 4
MFC-1125	LEXUS	LS430	UCF30L	2000-2006	UCF30L 4300. 3UZFE. DOHC. EFI. SEDAN. 2WD. Door 4
MFC-1125	LEXUS	GS430	UZS190	2005-2007	UZS190. 3UZFE. 2WD
MFC-1125	LEXUS	SC430	UZZ40	2005-2010	UZZ40. 3UZFE. 2WD
MFC-1125	TOYOTA	LAND CRUISER	UZJ100L	1998-1999	UZJ100L 4700. 2UZFE. DOHC. EFI. SUV Offroad. 4WD. Door 5
MFC-1125	TOYOTA	LAND CRUISER	UZJ100L	1999-2007	UZJ100L 4700. 2UZFE. DOHC. EFI. SUV Offroad. 4WD. Door 5
MFC-1125	TOYOTA	LAND CRUISER	UZJ200L	2007-2012	UZJ200L 4700. 2UZFE. DOHC. EFI. SUV Offroad. 4WD. Door 5
MFC-1125	TOYOTA	LAND CRUISER PRADO	GRJ120L	2003-2009	GRJ120L 4000. 1GRFE. DOHC. EFI. SUV Offroad. 4WD. Door 5
MFC-1125	TOYOTA	LAND CRUISER PRADO	GRJ125L	2003-2009	GRJ125L 4000. 1GRFE. DOHC. EFI. SUV Offroad. 4WD. Door 3
MFC-1125	TOYOTA	FJ CRUISER	GSJ10L	2006-2009	GSJ10L 4000. 1GRFE. DOHC. EFI. SUV Offroad. 2WD. Door 5
MFC-1125	TOYOTA	FJ CRUISER	GSJ15L	2006-2009	GSJ15L 4000. 1GRFE. DOHC. EFI. SUV Offroad. 4WD. Door 5
MFC-1125	TOYOTA	LAND CRUISER	FZJ80L	1996-1998	FZJ80L 4500. 1FZFE. DOHC. EFI. SUV Offroad. 4WD. Door 5
MFC-1125	TOYOTA	SEQUOIA	UCK35L	2000-2007	UCK35L 4700. 2UZFE. DOHC. EFI. SUV Offroad. 2WD.

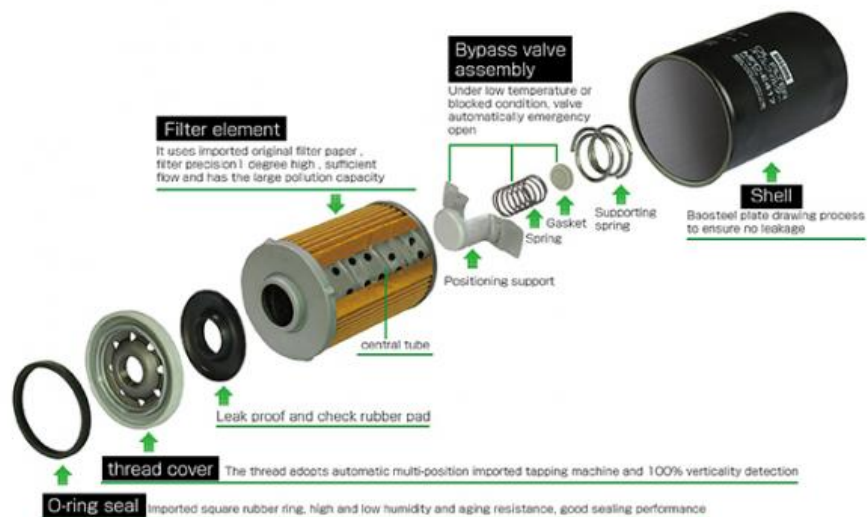
Contact Supplier send an enquiry to
confirm suitable car

MFC-1125

MASUMA



MASUMA LUBE SPIN-ON FILTER (SCHEMATIC DIAGRAM)



MASUMA

AUTO SPARE PARTS

— FILTER —



PREMIUM AUTO PARTS SOURCE FACTORY

100000+
OE Numbers

22 Years
Experience

MASUMA has 103 kinds of auto parts products, spark plugs, brake pads, and fuel pumps, etc., and we have products suitable for various car models.

The dangers of not changing the filter in time!!

Engine work requires the lubrication of oil. If the impurities in the oil are not filtered into the cylinder, the aging of the piston group and the cylinder will be accelerated.



Cylinder fray



Petrol blocked



Burn oil cylinder



Reduced engine power



Increased fuel consumption



Make noise

DO YOU NEED SUCH A FILTER ?

/ HANDLE ALL CHALLENGES WITH EASE /



Not easy to
deposit carbon



Slow wear



Protect the
cylinder



Reduce fuel
consumption

The function of the oil filter is to filter impurities, so it should be replaced at the same time as the oil. If it is not replaced in time, the oil will not be effectively filtered, which will lead to accelerated wear of the internal parts of the engine due to impurities in the oil.

WORKING PRINCIPLE :

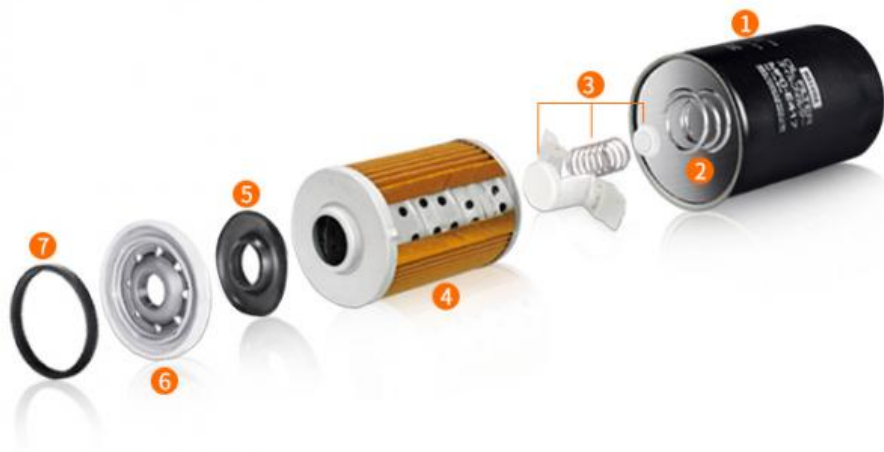
Filter impurities, dirt, etc. in the oil, provide reliable lubricating oil for the engine, reduce wear, reduce wear and prolong engine life.



Oil filter

Product Structure :

- The shell uses 0.5MM electrolytic plate, which is durable and not easy to be damaged.
- Bypass valve and check valve design to ensure continuous supply of oil.
- Adhesive-filled double lock seam can withstand pressures up to 300 p.s.i
- Multi-directional sealing ring ensures that the oil seal does not leak and can be quickly disassembled.



- | | | | |
|----------|-------------------------------|------------------|----------|
| 1 Shell | 3 Bypass valve | 5 Rubber gasket | 7 Gasket |
| 2 Spring | 4 Filter paper+Metal Intranet | 6 Threaded cover | |

Use high-quality cellulose filter paper.

Long-term guarantee of oil clean



Bypass valve device design, keep the maintain oil supply stability.

Bypass valve :

It is ensured that the oil in many cases is supplied to the bypass valve in the following cases, so as to ensure that a sufficient amount of oil reaches the surface of the engine parts to reduce friction.

- Oil is viscous in cold start or low temperature conditions.
- Exceeds the replacement cycle and the filter element is severely blocked.

Check valve :

Prevents lubrication when the engine is shut down again the oil in the system is emptied to ensure that when the engine starts quickly supply oil when moving.



MASUMA FILTER SERIES

/ PROVIDE CLEANING SOLUTIONS /

Air filter

Cabin filter

Oil filter

Fuel filter



MASUMA

Note:

MASUMA auto parts covered more than 900,000 different OEM numbers, [here only show few parts.](#)
Pls Contact us to check more and details information for you.

Search For Car Brand (Click)	Auto parts	Product List	Number of suitable car models	
For Japanes Car: For Toyota For Honda For Nissan For Mazda For Lexus For Infiniti For Mitsubishi For Suzuki For Subaru For DAIHATSU For ISUZU For Fuso	Auto Engine Systems	Air Filters	1215	
		Fuel Filters	255	
		Oil Filters	588	
		Spark Plugs	59	
		Engine Mounts	888	
		Ignition Coils	255	
		Ignition Cable	77	
		Timing Chain Kit	67	
		Cylinder Head Gaskets	223	
		Ball Joints	655	
		Control Arms	394	
		For Korean Car:		

For HYUNDAI		Rubber Bushing	685
For KIA		Shock Absorber Springs	153
	Auto Suspension Systems	Shock Absorbers	323
For Europe Car:		Stabilizer Links	453
For Benz		Suspension Strut Bearings	110
For BMW		Brake Pads	1966
For Audi		Brake Discs	825
For VW		Brake shoes	220
For Porsche		Brake Cables	216
For Skoda	Auto Brake Systems	Brake Hoses	707
For Renault		Tie Rod Ends	345
For Peugeot		Tie Rods (Rack End)	247
For Volvo		Steering Gear Boots	435
For Alfa Romeo		Steering Gears	60
For America Car:	Auto Steering Systems	Cabin Filters	736
For Ford		C.V. Joints	199
For OPEL	Air Conditioning Systems	C.V. Joint Boots	157
For Chevrolet		Tensioner & Belts	1043
	Auto Transmission Systems	Wheel Hubs	103
Other brand:		Antifreeze	4
For Land Rover		Brake Lubricants	2
For Jeep		Engine Lubricants	42
For Ssangyong	Fluid & Chemicals	Transmission Fluids	15
		Other Auto Parts	5074
		Tire Repair Tools	57
		Auto Fastener & Clip	1881
	Other Auto Parts	Lug Nuts & Accessories	233
		Other Vehicle Tools	15



MAIN CAR SERIES

Cover 90% Of JAPANESE And KOREA Cars



Corolla



Crown



Camry



Civic



Tiida



Accord



RX300



RAV4



Golf



Passo



HR-V



Fortuner



Yaris



Avanza



Land Cruiser



Pajero(Montero)



Mirage



Stream



Hilux



CR-V



Legacy



Fit (jazz)



HiAce



X-Trail



Primera



Cedric



Mazda 3



Mazda 6



Prius



City



Impreza



Focus



Company Profile



[View more history >>](#)

MASUMA was founded in 1998 Japan, integrates R&D, production, sales and operation as one. It has its

own wholly-owned subsidiary factory and joint venture production base in **GuangZhou China**, have an area of **30,000 sqm**, **500+ employees** in the company, the annual turnover to reach 55 million USD. Masuma specializes in the design, development, manufacturing, sales and service of Japanese, German, American, Chinese and Korean auto parts. The current products include lubricating oil, transmission fluid, brake oil, brake pad, brake disc, filter, spark plug, ignition coil, ball joint, swing arm, shock absorber, belt, wiper, water tank cover and other series, over ten thousands of varieties, and products are sold to more than 100 countries and regions in the world.

MASUMA	1998			1
2011		30,000	500	55
Masuma				
	100			



Manufacturing Technique



PRECISION

Automated machinery

100,000 pieces/day



TAKAMAZ-FEELER



BROTHER SPEEDIO



TOYO



Mitutoyo QC



NGATA



KAWATA

Exhibition

EXHIBITION



MASUMA Masuma (Guangzhou) International Trading Co., Ltd.

+8615323309608

msm@masuma.com

masumajp.com

No. 19, Liwu Road, Tanbu Town, Huadu District, Guangzhou